

**ENVIRONMENTAL IMPACT ASSESSMENT ALONG THE  
EFFLUENT CHANNEL FROM BARODA TO JAMBUSAR  
AND AT ITS CONFLUENCE WITH MAHI ESTUARY  
AT THE GULF OF CAMBAY WITH SPECIAL  
REFERENCE TO HEAVY METALS**



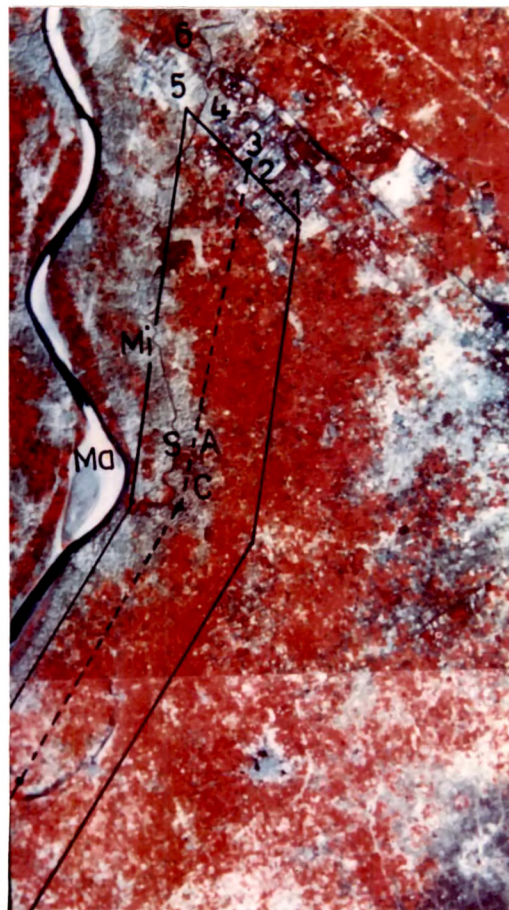
**AVNESH H. SHARMA**

**Division of Environmental Biology  
Department of Zoology  
Faculty of Science  
The M.S. University of Baroda, Baroda-2.  
India.**

**Ph. D. THESIS**

**SEPTEMBER, 1995**

Cover depiction.



Satellite imagery of the study area.

Ma - Mahi river	<u>SA</u> - Study area
Mi - Mini river	----C - Effluent channel
1 - Refinery	4 - Suhrid Geigy
2 - I.P.C.L	5 - G.I.D.C
3 - G.S.F.C	6 - Universal dye stuff.

**A THESIS SUBMITTED TO  
THE MAHARAJA SAYAJIRAO UNIVERSITY OF BARODA, BARODA  
FOR THE DEGREE OF  
DOCTOR OF PHILOSOPHY  
IN ZOOLOGY**