
THIRMA

(GHUNGHATA BAGH)

This bagh is embroidered on a white background with red single strand of silk floss thread. The motifs are outlined and divided in sections using yellow-gold single strand of silk floss by using back stitch.



Figure 2: Detail of the ghunghat (veil) of the ghunghata bagh

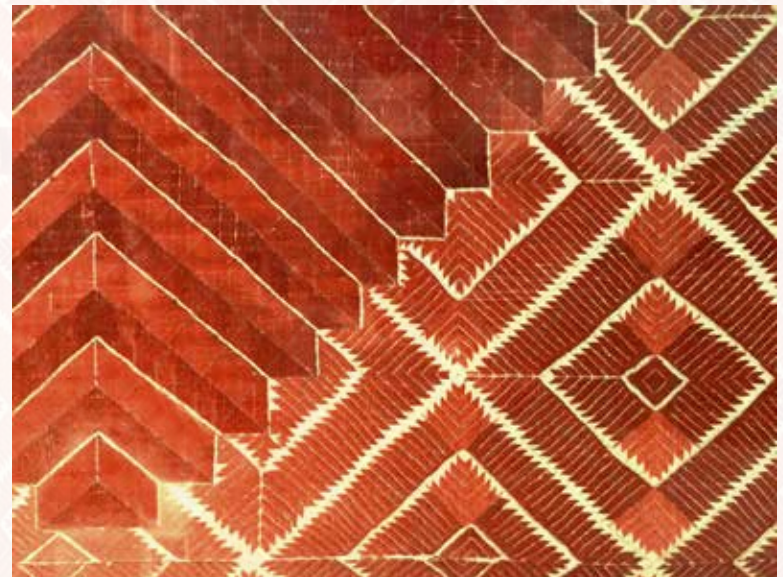


Figure 2a: Detail of the field of the ghunghata bagh



The centre of both selvedges is densely embroidered with a triangular motif with red single strand silk floss thread. The change in direction of the stitches causes striking shades of the single colour and gives it bi-directional view to the viewer. The complete bagh is 45 inches wide with is created by joining two panels that are hand stitched.

One of the corners is densely embroidered with geometric motif that acts as a nazar battu; the center of three diamond motif is embroidered with magenta pink and white silk threads. Each motif repeat is 10 inches x 10 inches in dimension. On the other side of the phulkari towards the selvedge is a change in pattern is observed where the central diamond motif is densely embroidered with brick motif like that observed in a darshan dwar.

The stitches in the big triangular motif which is embroidered in the centre of the selvedge which sit on the wearer's head are done using darning stitch by picking alternate yarn in the base to at least 1.5 inches. The ends of the bagh are left unfinished and the selvedges are finished using diagonal satin stitches.



Serial number in its display order	01
Accession number	68/4868
Type	Thirma (Ghungkata bagh)
Year/ Period/ Province	1968 (purchase year)
Dimensions in:	
Length (inches)	Length 104 inches
Width (inches)	Width 45 inches
Panel	2 (15.2 + 29.8)
Fabric	Cotton khaddar
Fabric Count	18endsX16picks
Fabric colour	White
Threads	Silk floss
Thread colours	Red/ Maroon
Stitches	Surface satin stitch, back stitch
Edges and finishing	Done with diagonal satin stitches
Length of stitches	0.15 to 1 cm



CHOPE

(COTTON KHADDER)

The chope is constructed using two panels that are hand stitched to achieve the required width of the final piece. Three peacock motifs are embroidered parallel to both the selvages. The huge triangular motifs are embroidered with pattern resembling lattice work on one side and variation of square on the other side. Each triangular motif is about 32 inches of length and about 11 inches width (i.e the height of the triangle). The selvages are embroidered with borders which are approx 6 inch wide on one end of the border is embroidered with a nazar battu to cut the rhythmic flow of the motifs and is embroidered with a variation to distract the eye of the viewer that follows evenness and uniformity. The other two ends of the chope fabric are left unfinished. The chope is kept un-embroidered for approx 7 inches towards ends on both the sides.



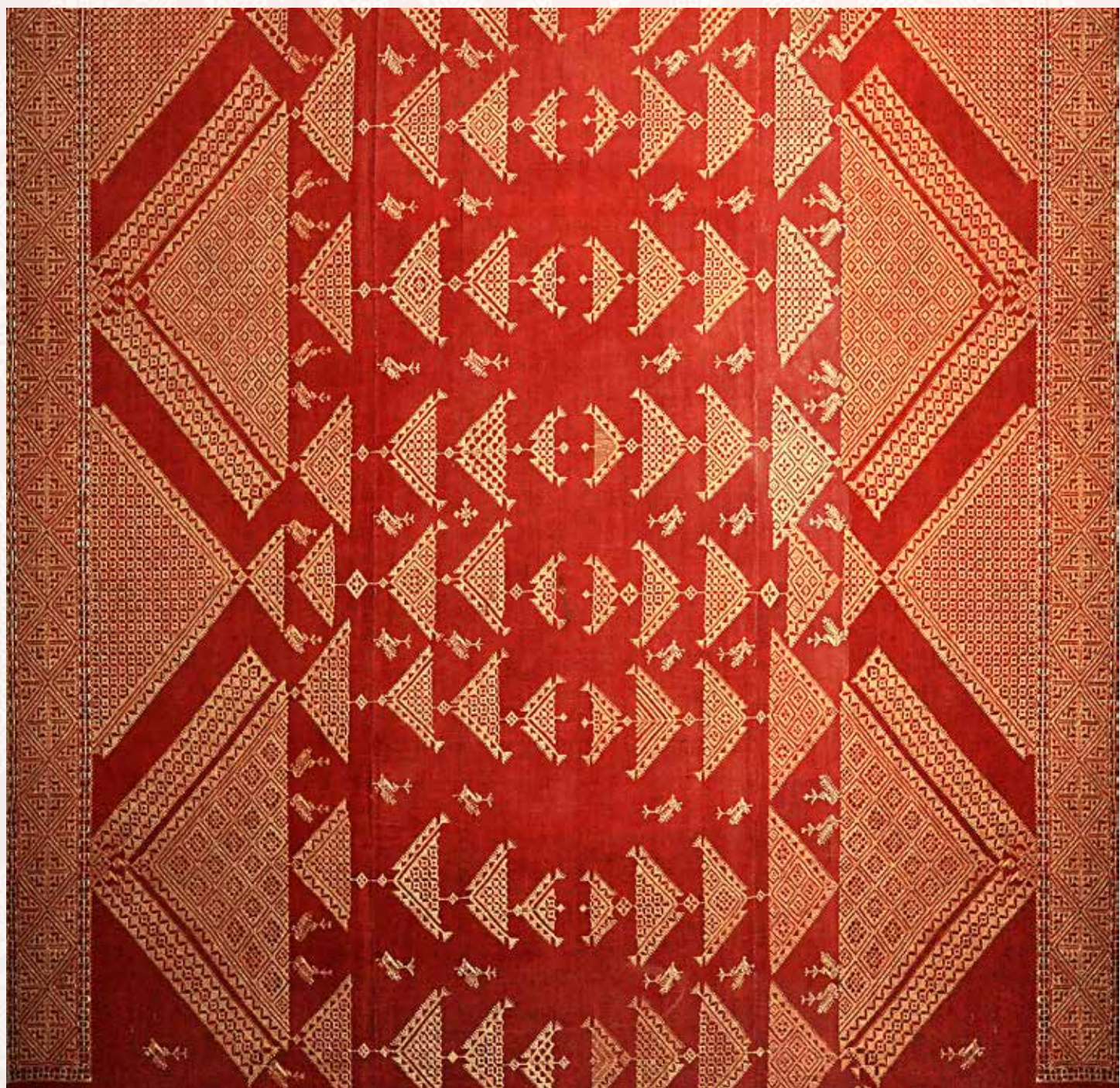


Serial number in its display order	02
Accession number	7/4969 (2)
Type	Chope
Year/ Period/ Province	1969 (purchase year)
Dimensions in:	
Length (cms)	Length 114 inches
Width (cms)	Width 67 inches
Panel	2 (22.8 wide + 44.2 wide)
Fabric	Cotton khaddar
Fabric colour	Red
Threads	Silk floss
Thread colours	Yellow
Stitches	Holbein stitch
Edges and finishing	Button-hole stitch on the selvages, ends left raw
Length of stitches	0.2-0.5 cms

The length wise edges of the selvages are finished with a matching thread by using buttonhole stitch. The center of the chope divides the pattern embroidered along the sides of selvages with the help of gap of 6 inches approx.

One end of the chope is embroidered with an incomplete peacock motif which also may act like a nazar battu i.e to distract the evil eye (2 inches). On the same end of the progressive triangular motif also looks empty as only the out-lines are embroidered and field inside is left in complete.

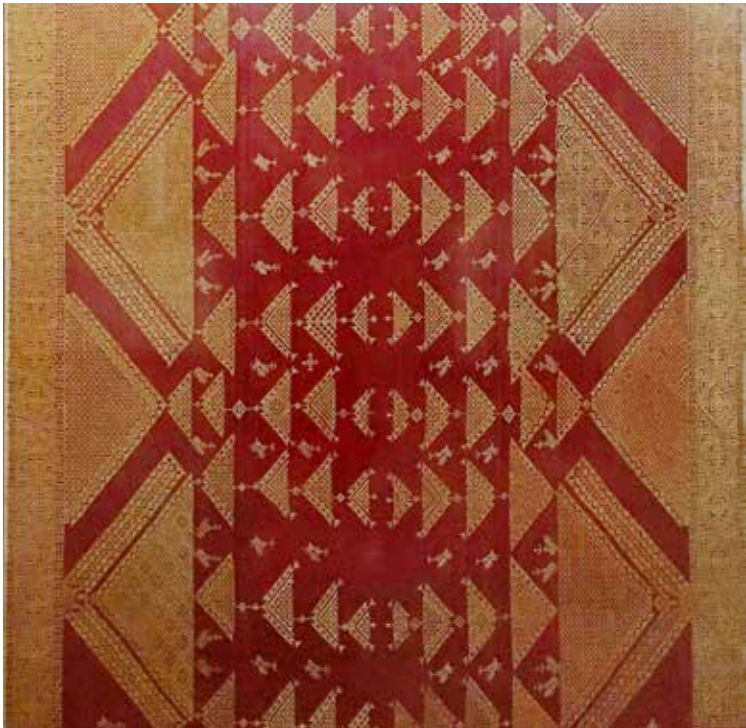




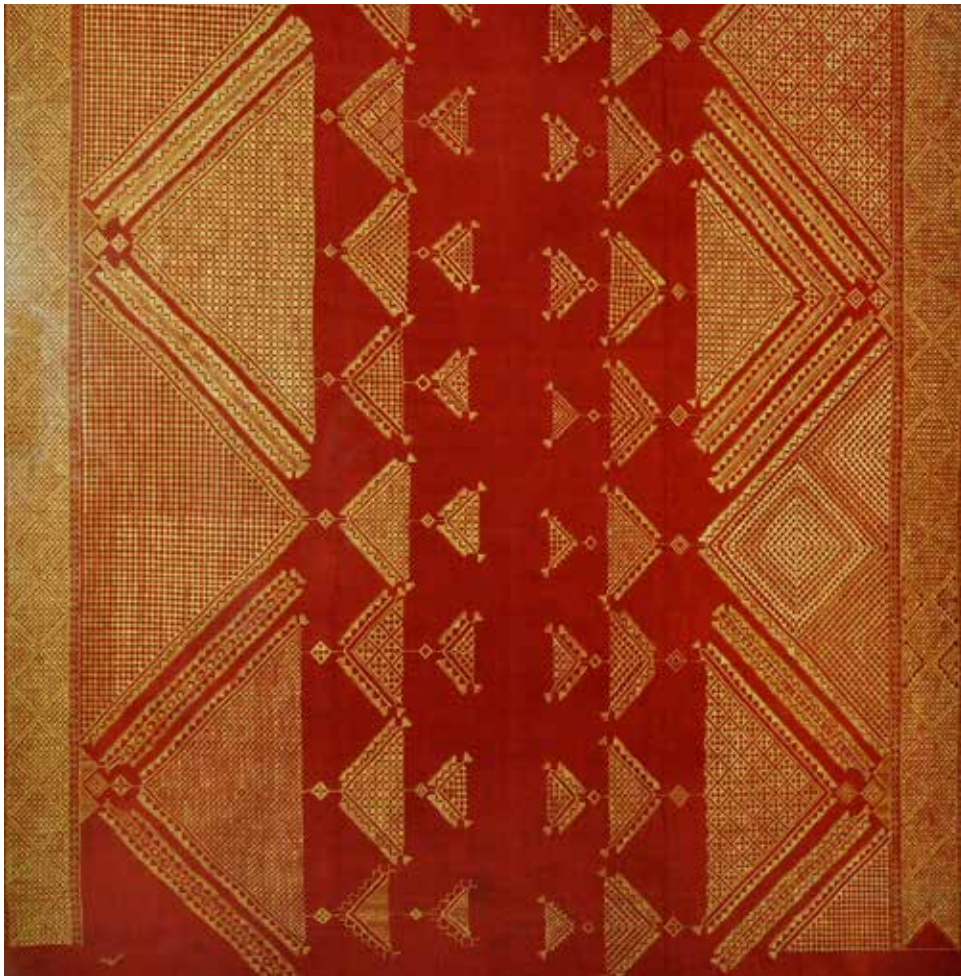
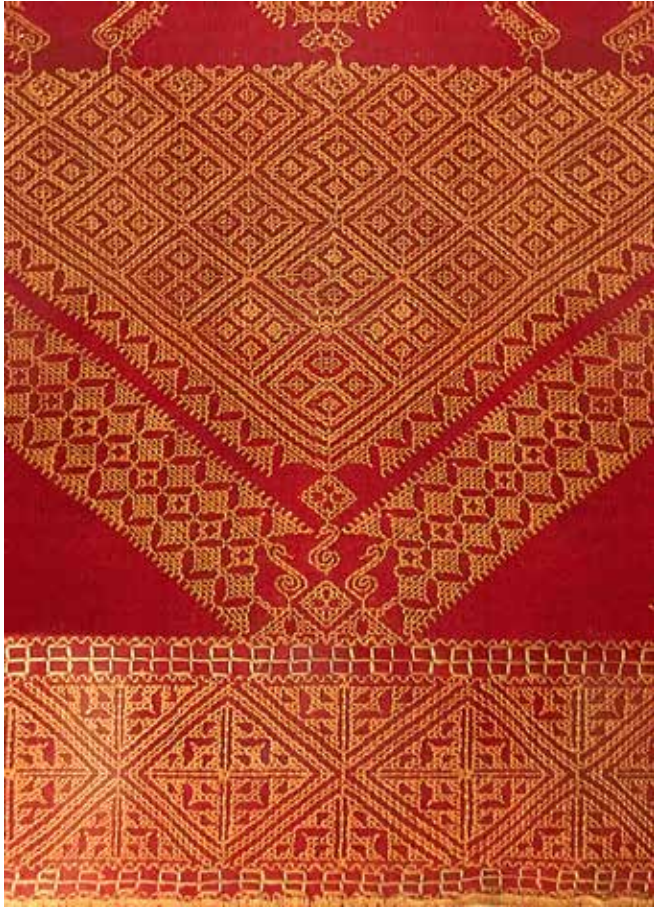
CHOPE

(RED KHADDER)

The huge chope is covered in peacocks which are used as filler motifs. The triangular motifs and inverted triangular motifs are identically embroidered on both the edges. The other two ends are left un-embroidered for about 6 inches on either side.

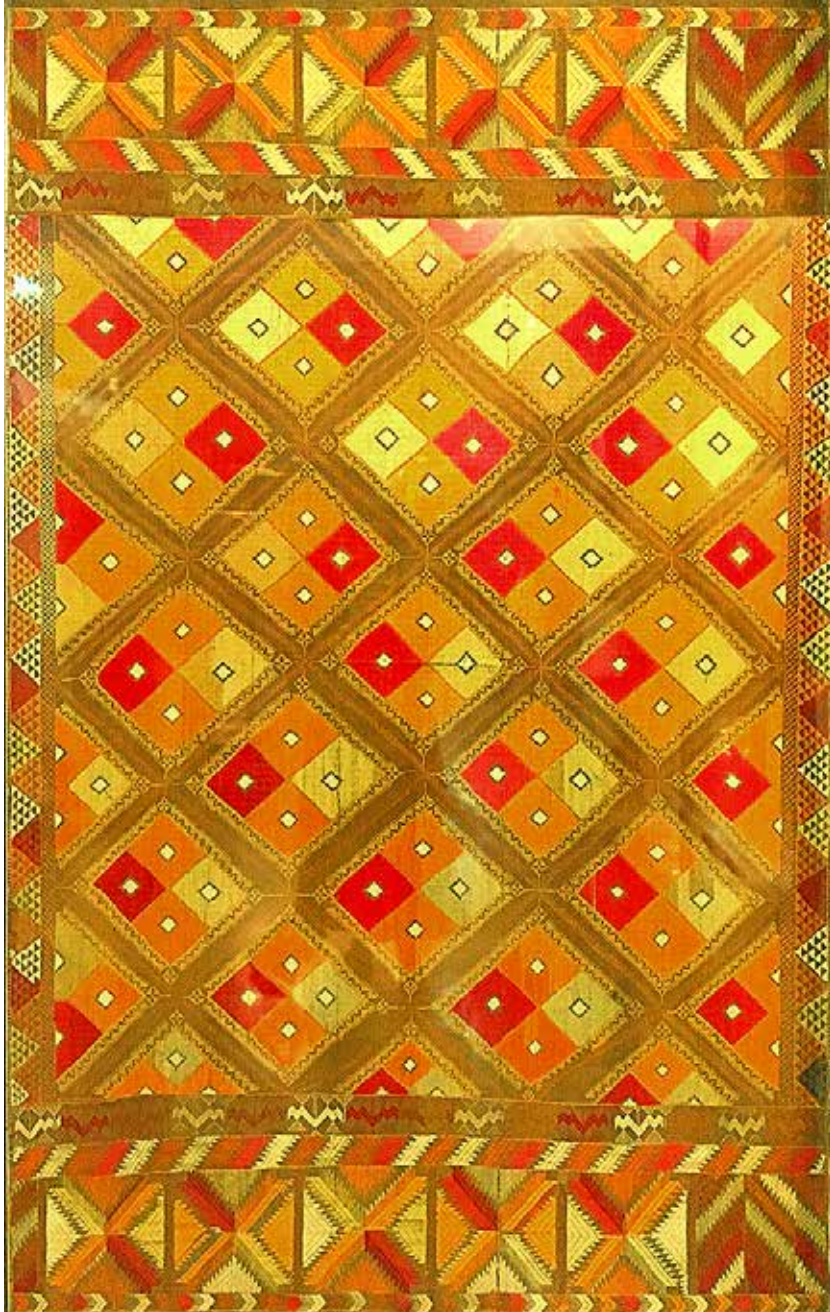


Serial number in its display order	03
Accession number	55/18/68
Type	Chope
Year/ Period/ Province	1955 (purchase year)
Dimensions in:	
Length (cms)	Length 134 inch
Width (cms)	Width 67 inch
Panel	2(22.4+44.6)
Fabric	Red khaddar
Fabric colour	Madder red
Threads	Silk floss
Thread colours	Yellow/ purple
Stitches	Reversible
Edges and finishing	Dense button hole stitch
Length of stitches	0.25 cm



Somewhere in the middle a small motif of about 2 cm x 2 cm embroidered in purple thread is seen which serves as a nazar battu. There is a variation of the thread observed in this chope, as after the end of one batch of threads, it was difficult and most of the time not possible to procure the exact same shade of the colour of thread used earlier. A very close and dense button-hole stitch is used to finish the edges which run in length wise direction.

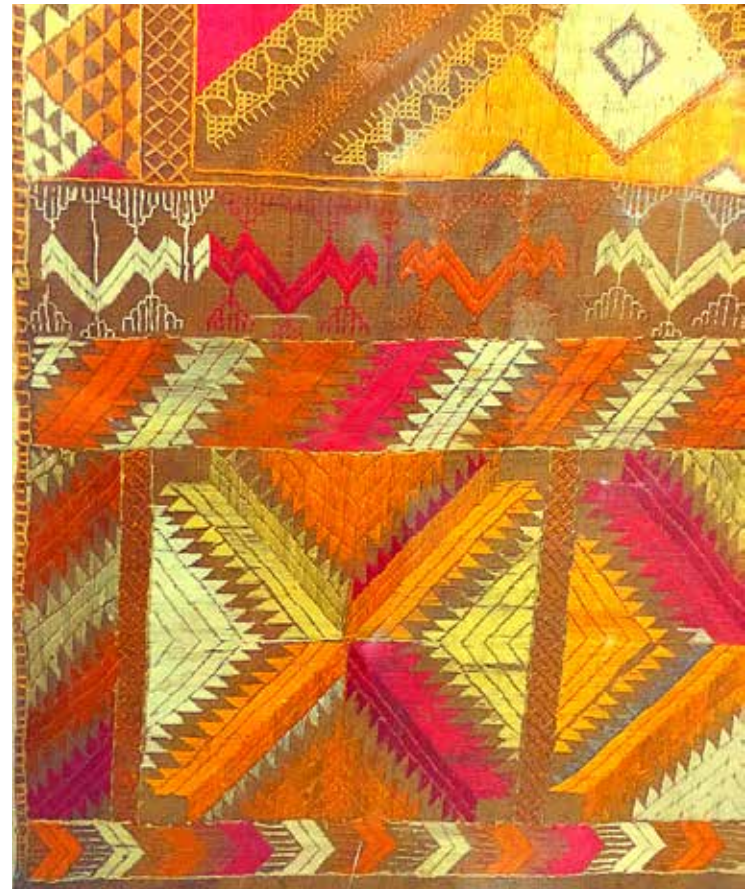
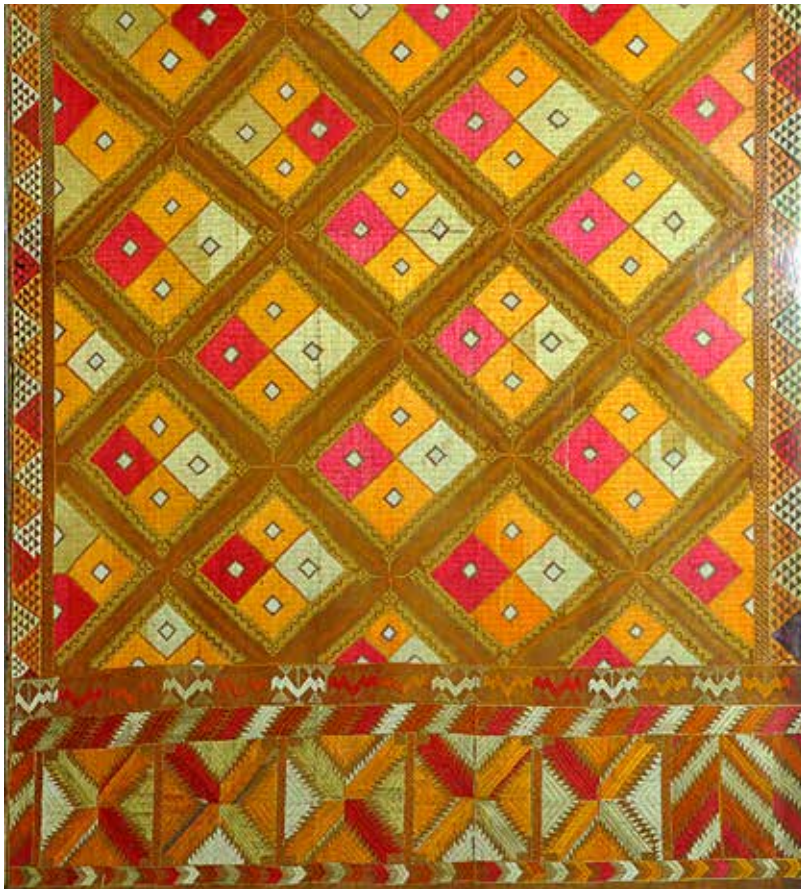
KAUDI BAGH



This bagh is a combination of stitches used in chope and phulkari namely holbein stitch and surface satin stitch. The field of the bagh is divided into a diagonal checkered grid where each check is further divided into four squares. Within it is placed a white small square, which is a very peculiar representative of a *kauri*.



This bagh is divided in field, borders and ends. The length wise borders which run parallel at the selvages are filled with triangular motif placed at juxtaposition to each other.



Serial number in its display order	04
Accession number	18/60 (09181)
Type	Kaudi bagh
Year/ Period/ Province	1955 purchase year
Dimensions in:	
Length (cms)	Length 90.6 inch
Width (cms)	Width 54.8 inch
Panel	3(22+10.2+22.6)
Fabric	Cotton khaddar
Fabric colour	Brown (jute) or faded madder red.
Threads	Silk floss
Thread colours	Magenta, light green, yellow.
Stitches	Reversible stitch, surface satin stitch, buttonhole stitch
Edges and finishing	Button hole stitch
Length of stitches	0.5-1.5 cms



The edges of the bagh are finished only on the selvages with the help of buttonhole stitch. Each end is divided in 6 sections which is embroidered by a diamond motif. The opposite ends are embroidered with the motifs which are differently patterned and embroidered.

On one end towards the border at the selvedge is a nazar battu which is embroidered in a navy blue colour. The line between the body/ field of the fabric and ends is a zigzag motif. It can also be a stylized snake which is protecting the kaudi bagh from the evil eye.



