

PHOTOGRAPHS



Figure 6.1 Samsung microwave oven



Figure 6.2 Formalin fixation



Figure 6.3 Automatic tissue processor



Figure 6.4 Embedding



Figure 6.5 Rotary microtome

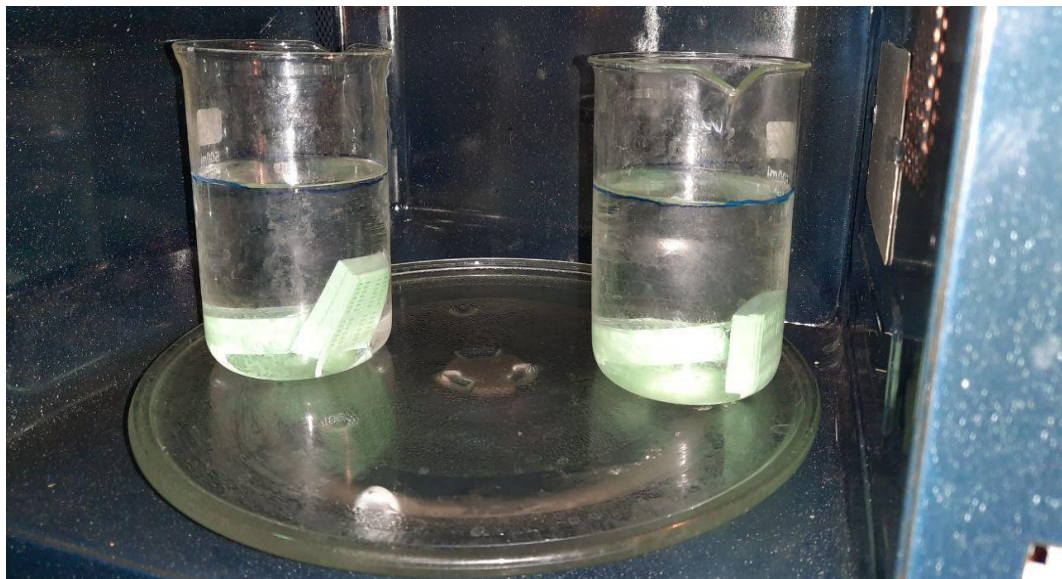


Figure 6.6 four tissues in microwave for processing

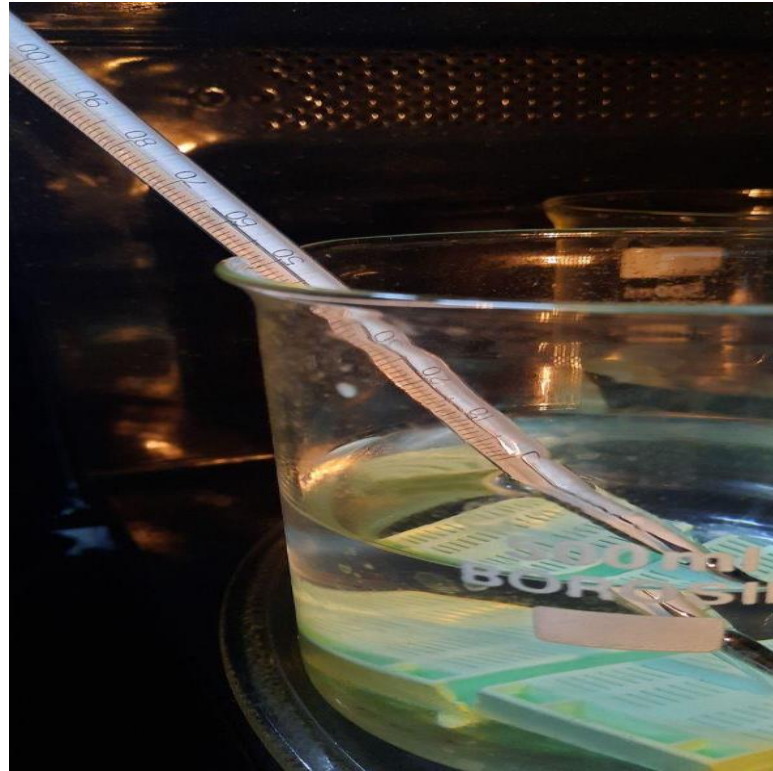


Figure 6.7 Temperature at the end of 1st cycle(dehydration)



Figure 6.8 Temp at the end of 4th cycle(intermedium)



Figure 6.9 Paraffin wax molten on hotplate



Figure 6.10 SLEE Low profile microtome blade

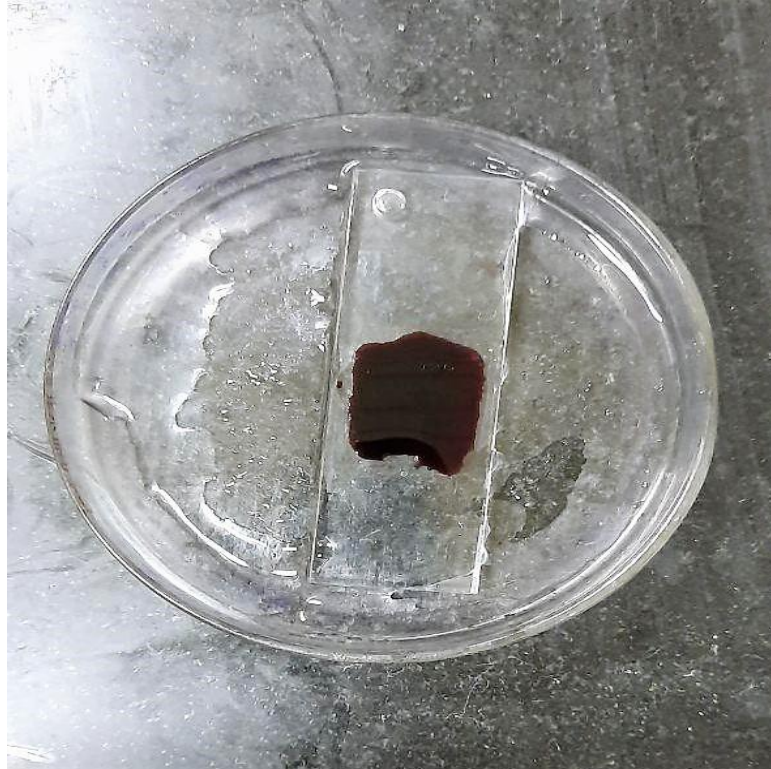


Figure 6.11 H & E staining in petridish by microwave method

Figure 6.12 Gross Dimentions before and after Processing

Case Number: 331

Histopathology Number: 562/20

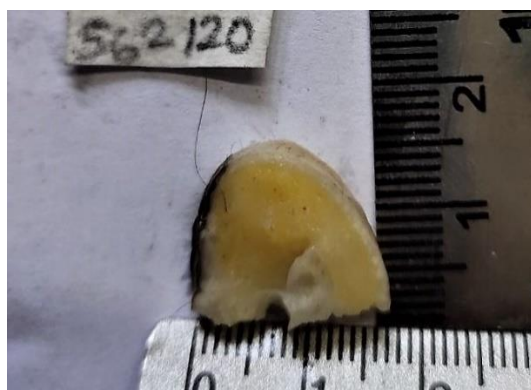
Diagnosis: Mature cystic teratoma

Dimentions Before Processing

Routine method

1.6 x 1.5 x 0.4

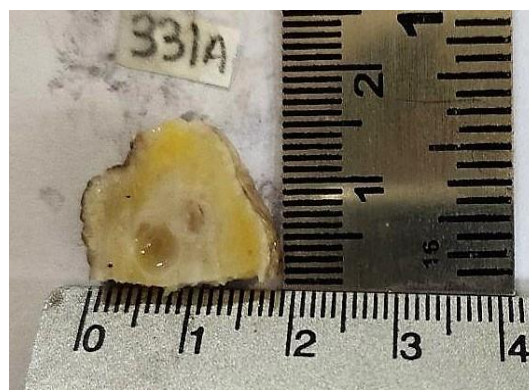
(331B)



Microwave method

1.6 x 1.5 x 0.4

(331A)



Dimensions After processing

Routine method

1.5 x 1.3 x 0.3

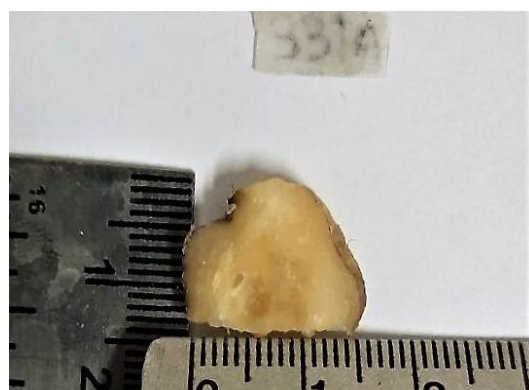
(331B)



Microwave method

1.5 x 1.3 x 0.3

(331A)



Case Number: 339

Histopathology Number:1423/20

Diagnosis: Transitional cell carcinoma of ovary

Dimentions Before Processing

Routine method

1.5 x 1.5 x 0.4

(339A)



Microwave method

1.5 x 1.5 x 0.4

(339B)



Dimensions After processing

Routine method

1.4 x 1.3 x 0.3

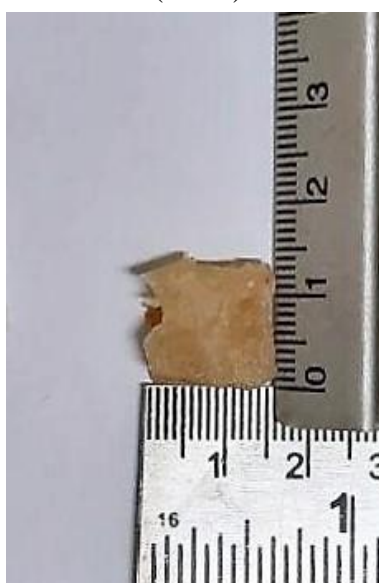
(339A)



Microwave method

1.4 x 1.3 x 0.3

(339B)



Case Number: 341

Histopathology Number:5388/19

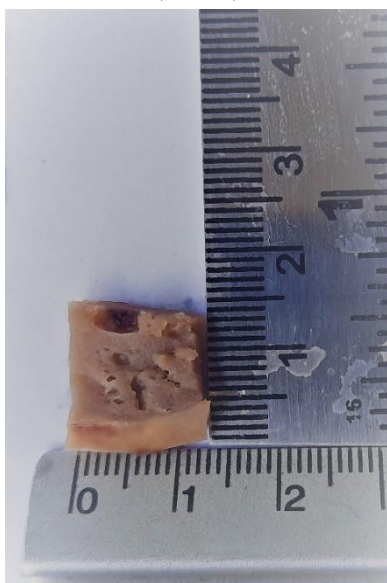
Diagnosis: Solid pseudopapillary neoplasm of pancreas

Dimensions Before Processing

Routine method

1.3 x 1.3 x 0.3

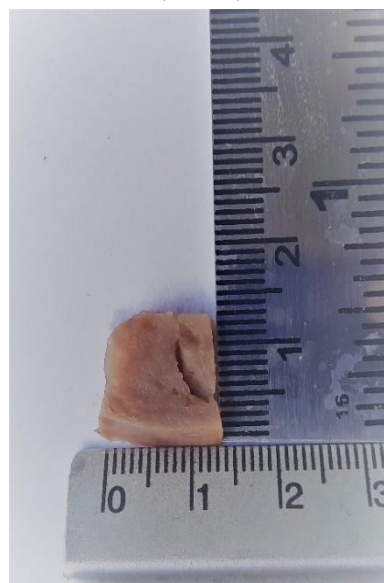
(341B)



Microwave method

1.3 x 1.3 x 0.3

(341A)



Dimensions After processing

Routine method

1.2 x 1.2 x 0.2

(341B)



Microwave method

1.2 x 1.1 x 0.2

(341A)



Case Number: 348

Histopathology Number:1607/20

Diagnosis:Seminoma of testis

Dimentions Before Processing

Routine method

1.6 x 1.5 x 0.4

(348A)



Microwave method

1.6 x 1.5 x 0.4

(348B)



Dimensions After processing

Routine method

1.5 x 1.5 x 0.3

(348A)



Microwave method

1.5 x 1.5 x 0.3

(348B)



Case Number: 349

Histopathology Number:1695/20

Diagnosis: Tuberculosis of intestine

Dimentions Before Processing

Routine method

(2.0 x 1.0 x 0.4)

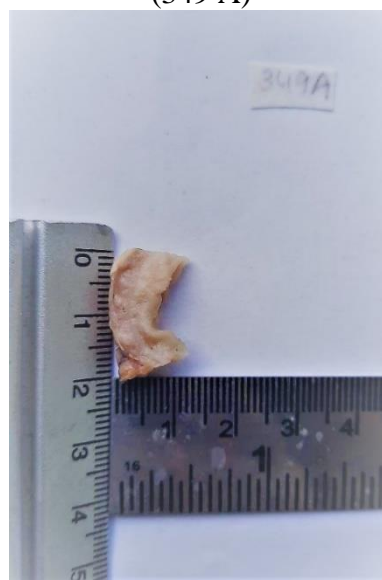
(349 B)



Microwave method

(2.0 x 1.0 x 0.4)

(349 A)



Dimensions After processing

Routine method

(2.0 x 1.0 x 0.3)

(349 B)



Microwave method

(1.7 x 0.9 x 0.3)

(349 A)

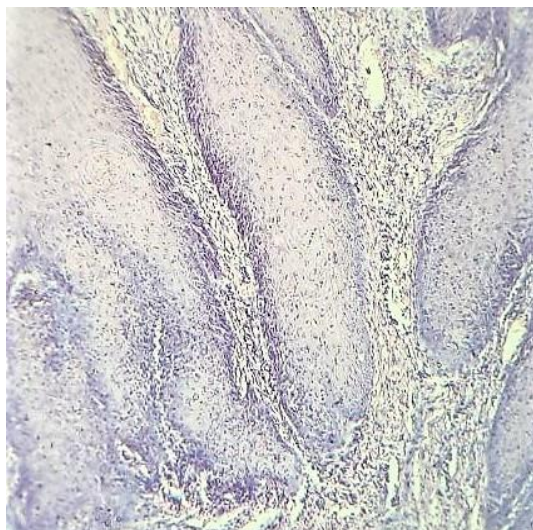


Figure 6.13 - H and E images

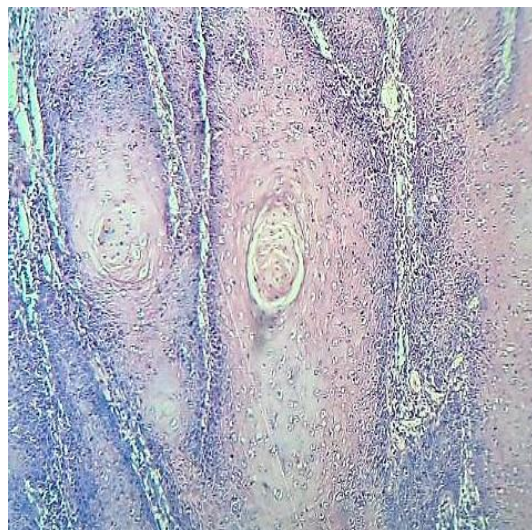
Case number: 11

HP Number:4057/18

Diagnosis:Squamous cell carcinoma of thigh



Routine method

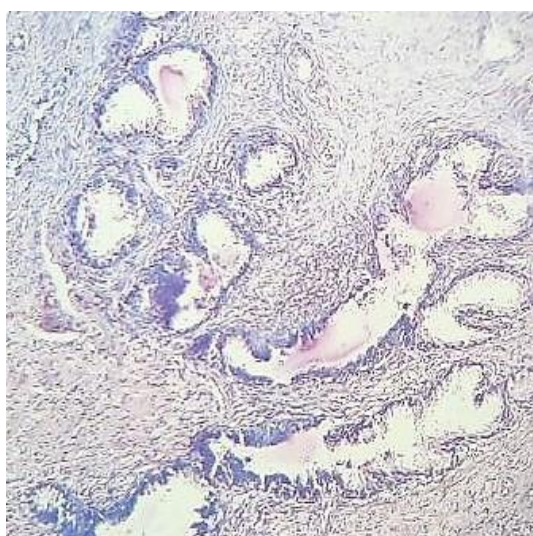


Microwave method

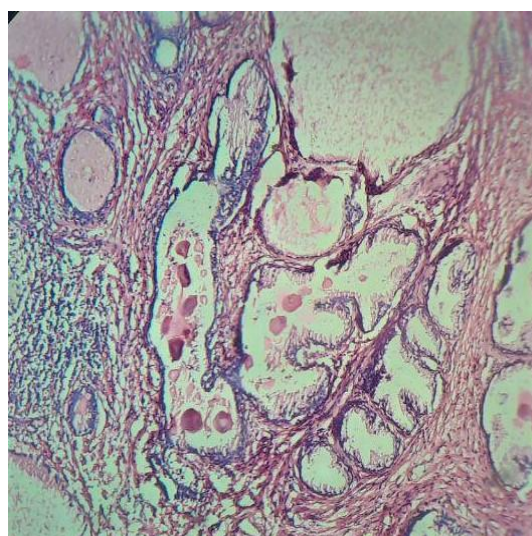
Case number: 25

HP Number:2393/18

Diagnosis: Benign Prostatic Hyperplasia



Routine method

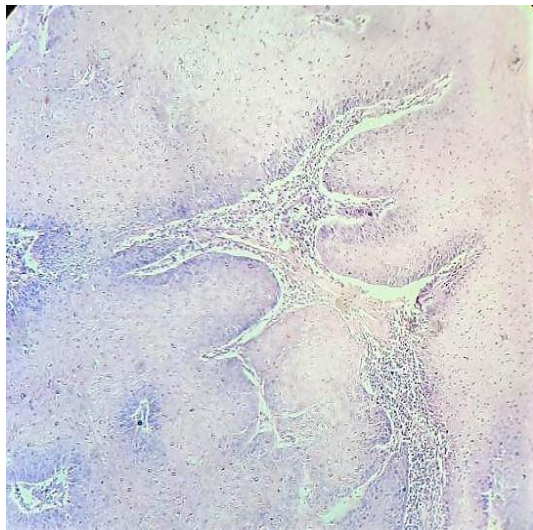


Microwave method

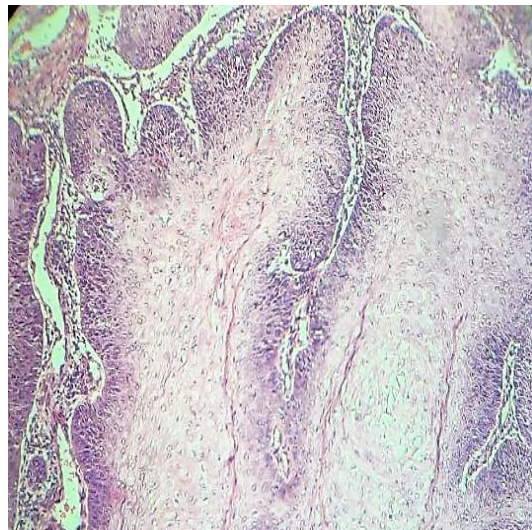
Case number: 26

HP Number:2387/18

Diagnosis:Squamous cell carcinoma



Routine method

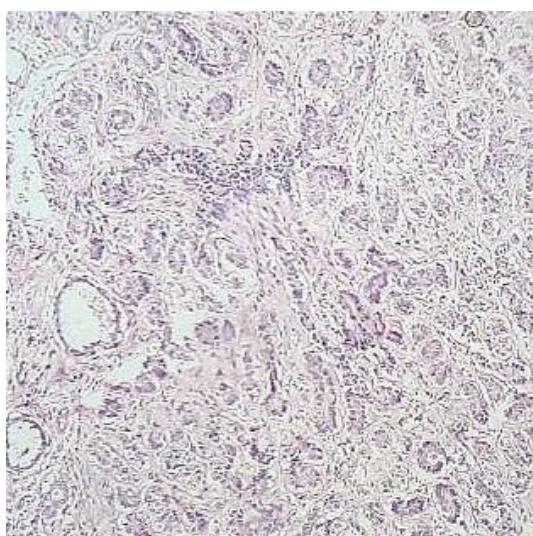


Microwave method

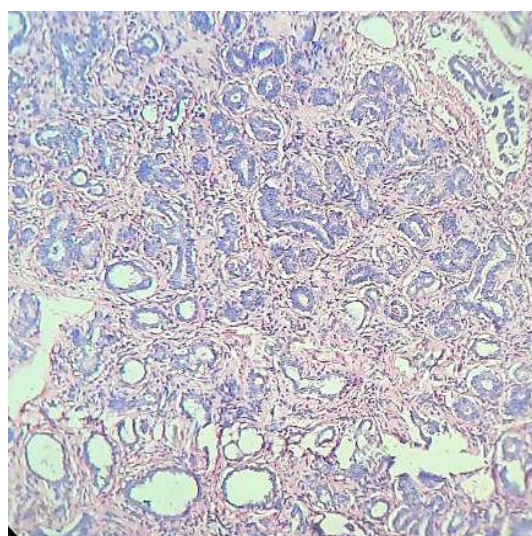
Case number:39

HP Number:4167/18

Diagnosis: Tubular adenoma of breast



Routine method

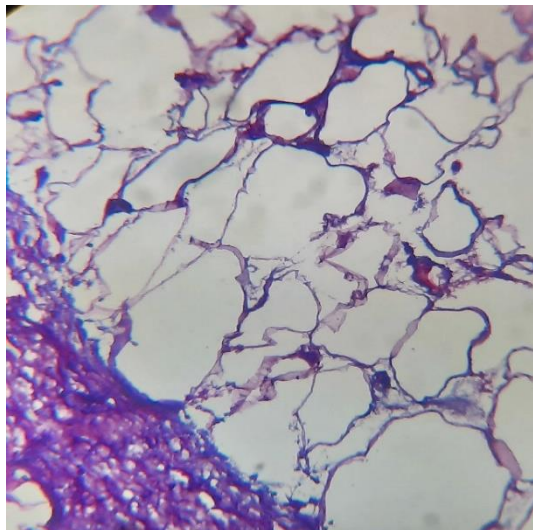


Microwave method

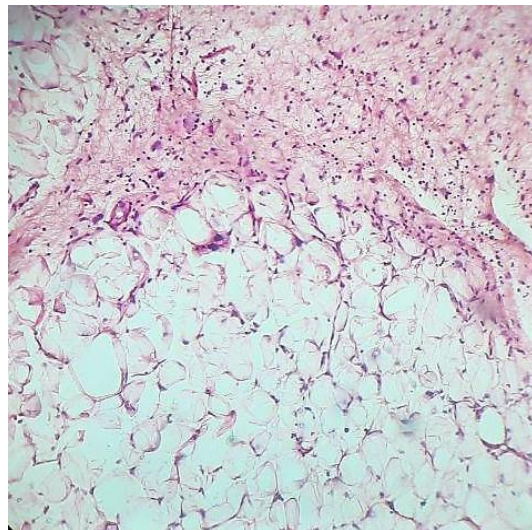
Case number: 53

HP Number:4639/18

Diagnosis:Dedifferentiated liposarcoma



Routine method

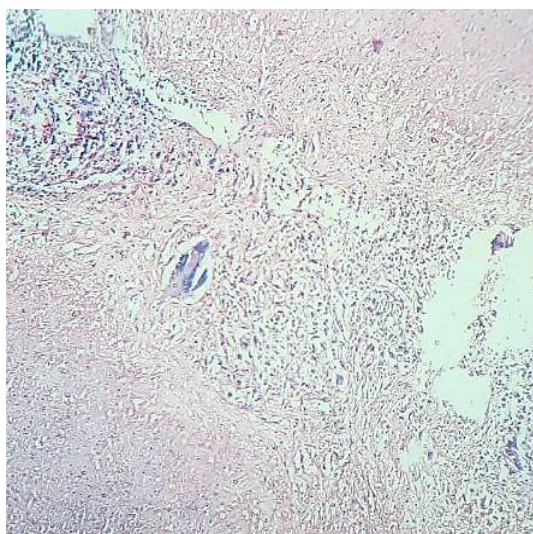


Microwave method

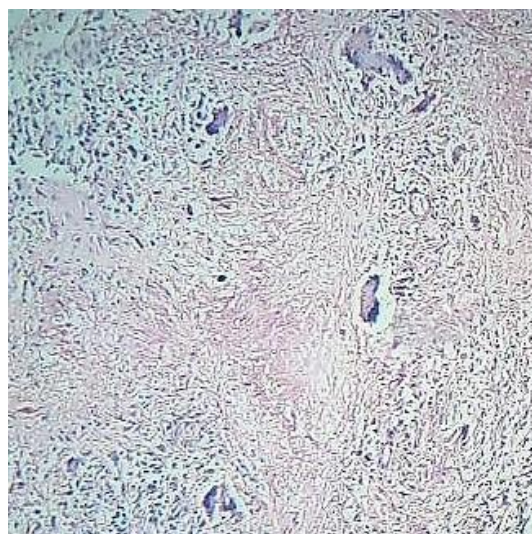
Case number: 55

HP Number:4688/18

Diagnosis:Tuberculosis of lymphnode



Routine method

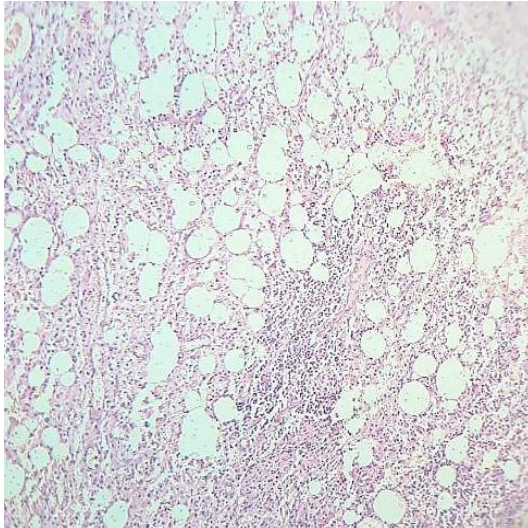


Microwave method

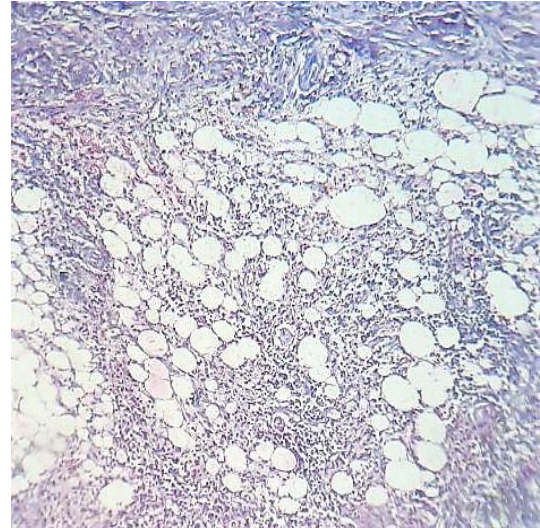
Case number: 66

HP Number:5205/18

Diagnosis:Inflammation in umbilical fistula



Routine method

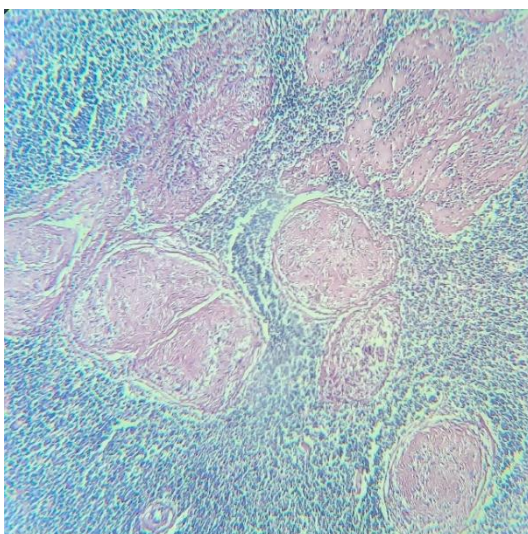


Microwave method

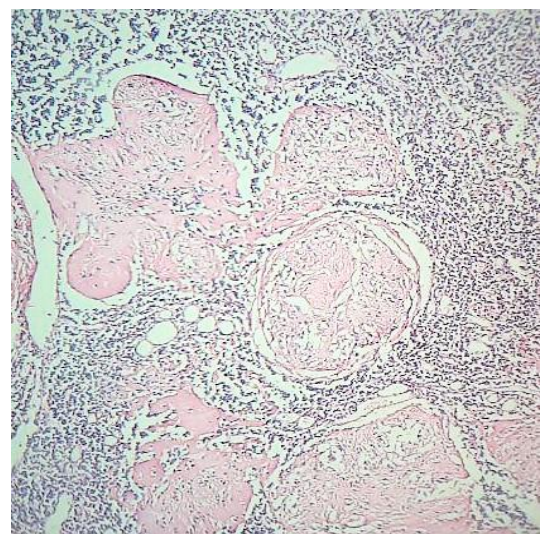
Case number: 77

HP Number:5050/18

Diagnosis:Sarcoid like granuloma in lymphnode(Infiltrating Ductal Carcinoma breast)



Routine method

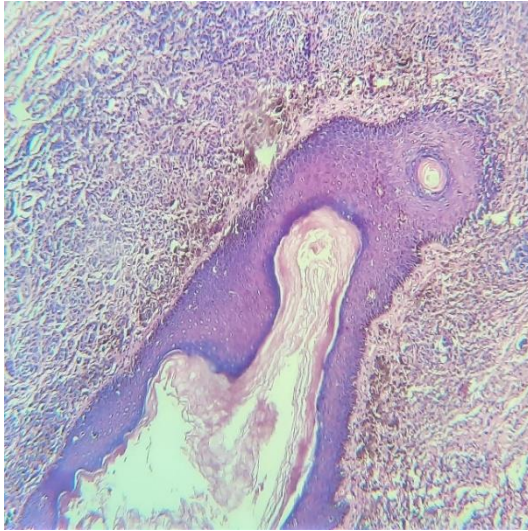


Microwave method

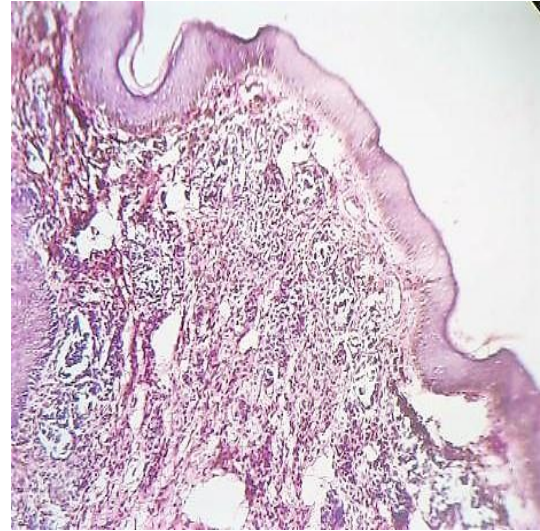
Case number: 78

HP Number:5161/18

Diagnosis: Compound nevus



Routine method

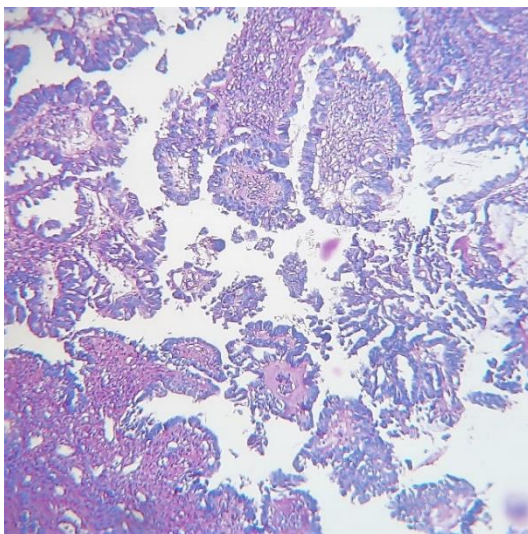


Microwave method

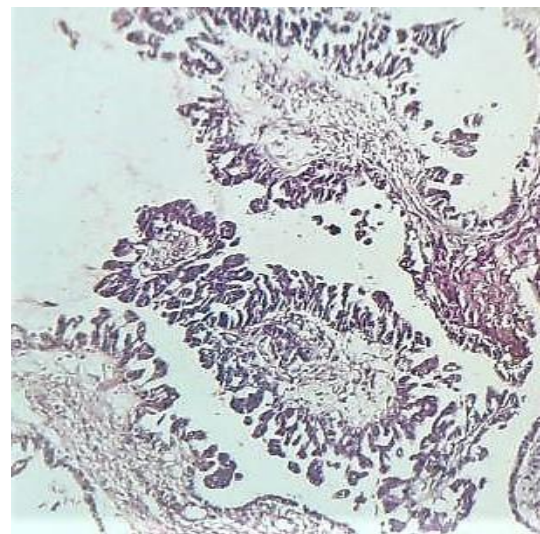
Case number: 79

HP Number:5045/18

Diagnosis: Micropapillary carcinoma of ovary



Routine method



Microwave method

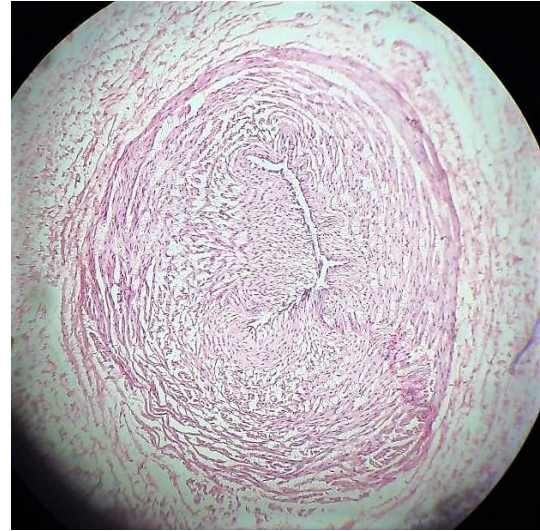
Case number: 80

HP Number:5105/18

Diagnosis:Umbilical cord



Routine method

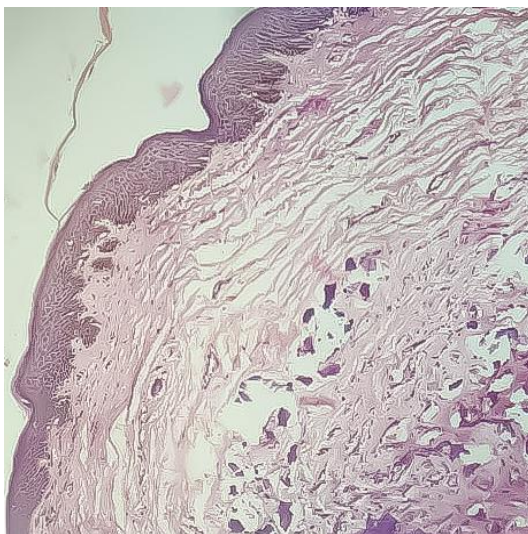


Microwave method

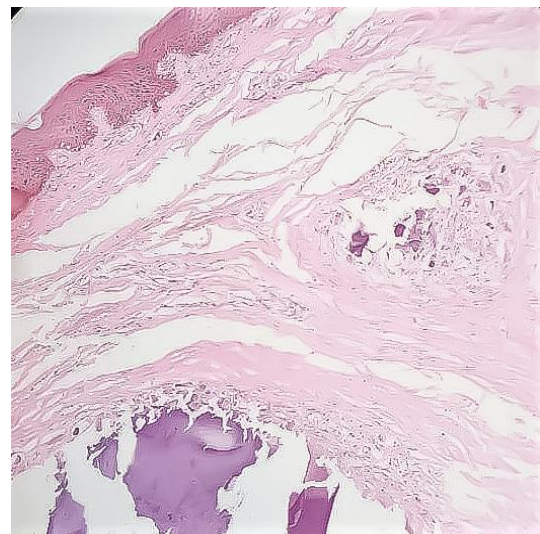
Case number: 84

HP Number:5308/18

Diagnosis: Calcinosis cutis



Routine method

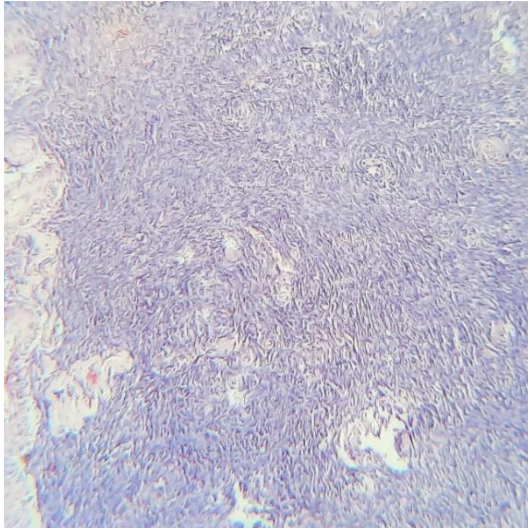


Microwave method

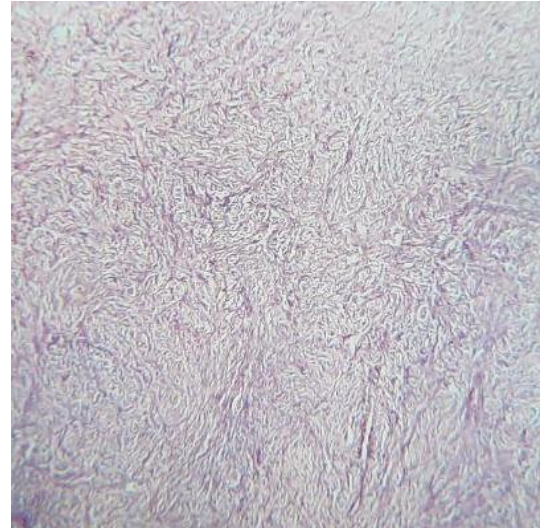
Case number: 82

HP Number:5302/18

Diagnosis:Normal ovary



Routine method

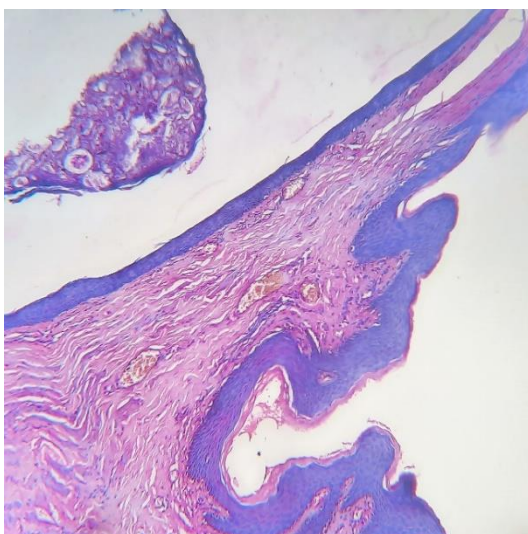


Microwave method

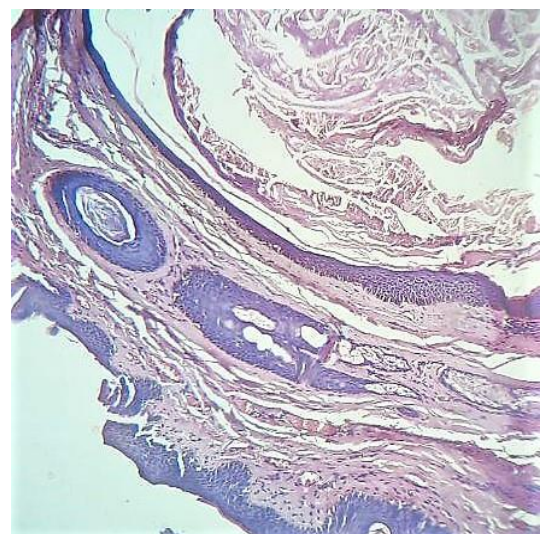
Case number: 83

HP Number:5310/18

Diagnosis:Multiple keratinous cyst on scrotum



Routine method

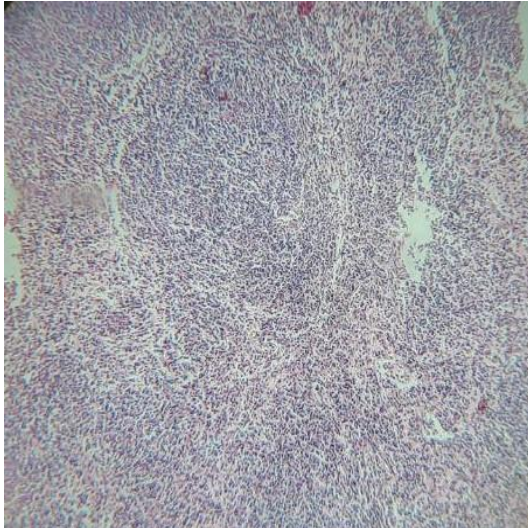


Microwave method

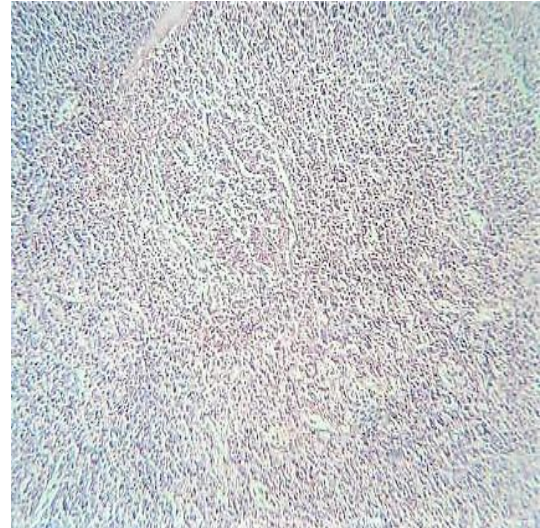
Case number: 104

HP Number:5485/18

Diagnosis: Tonsil



Routine method

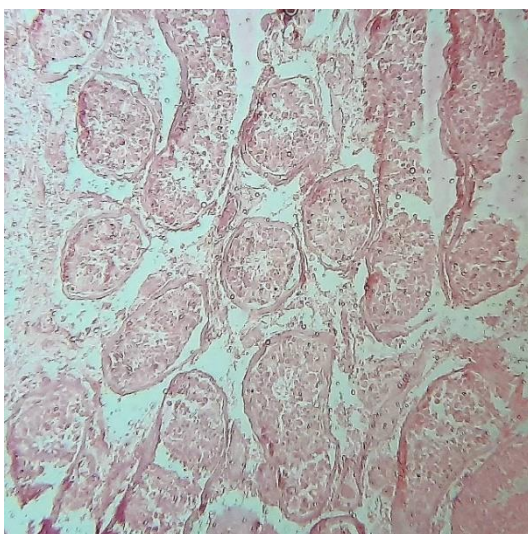


Microwave method

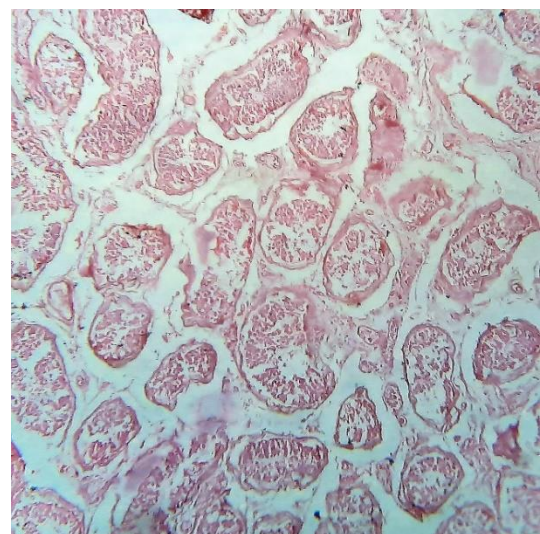
Case number: 129

HP Number:12/19

Diagnosis: Testicular infarct



Routine method

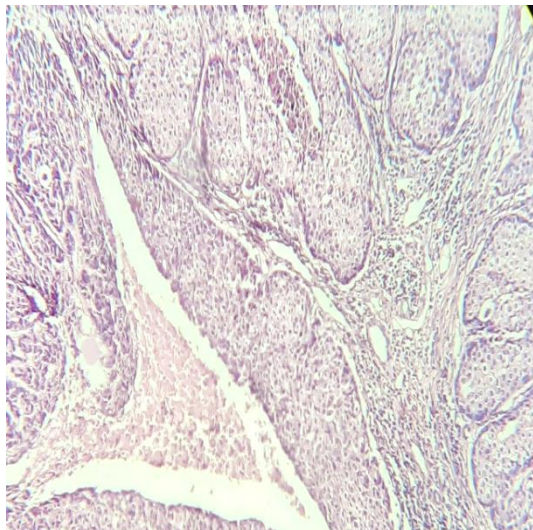


Microwave method

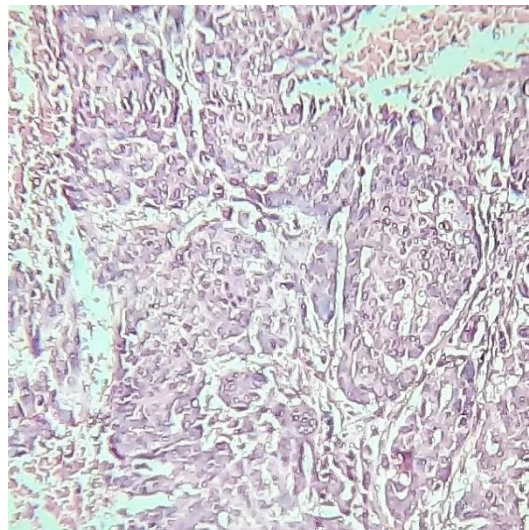
Case number: 131

HP Number:93/19

Diagnosis: Carcinosarcoma of salivary gland



Routine method

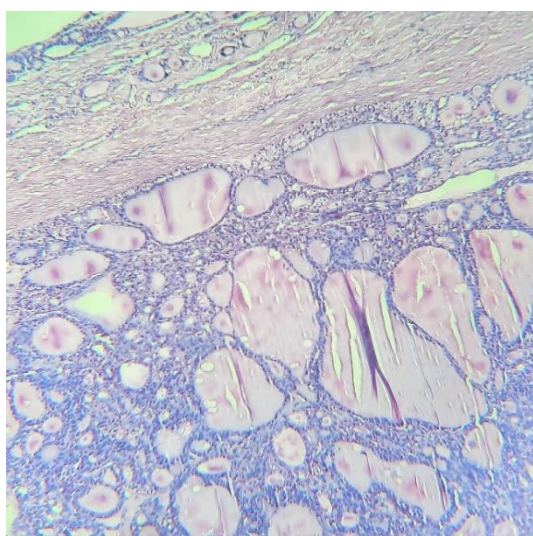


Microwave method

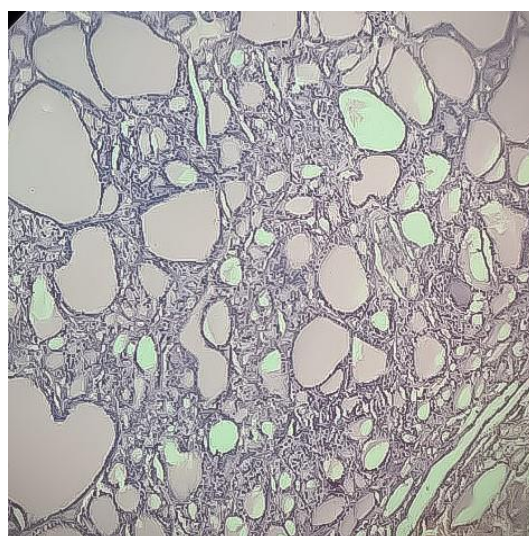
Case number: 191

HP Number:495/19

Diagnosis: Follicular adenoma



Routine method

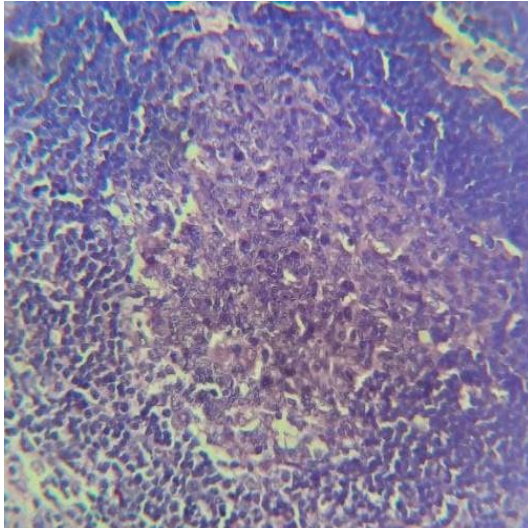


Microwave method

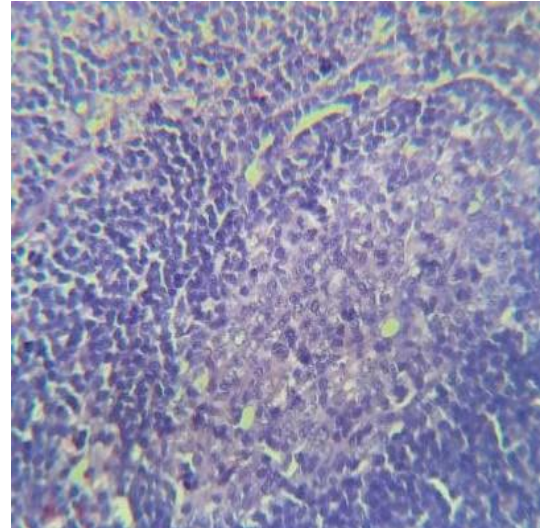
Case number: 134

HP Number:144/19

Diagnosis: Tonsil (Reactive lymphoid hyperplasia)



Routine method

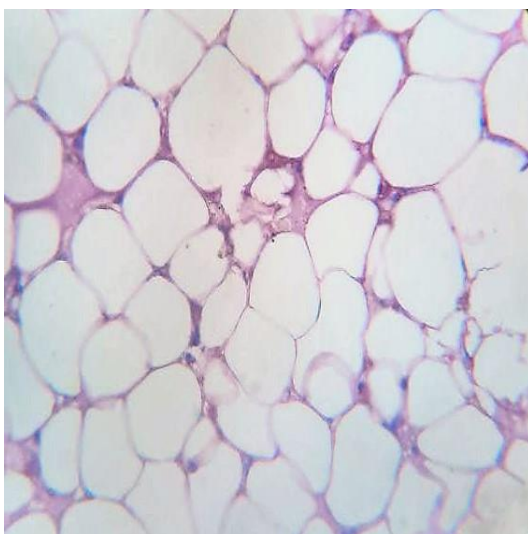


Microwave method

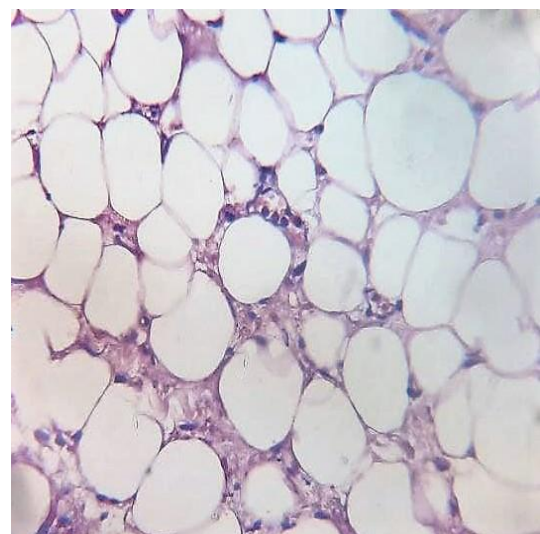
Case number: 113

HP Number:5531/18

Diagnosis: Lipoma



Routine method

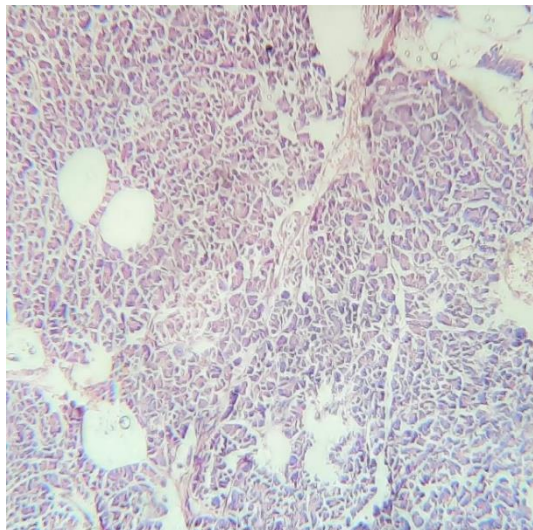


Microwave method

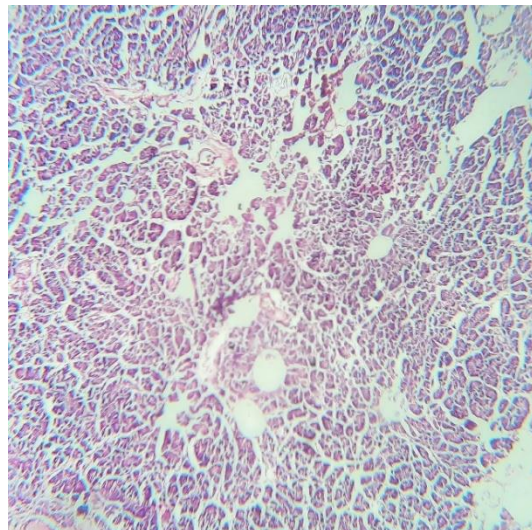
Case number: 194

HP Number:445/19

Diagnosis: Pancreas



Routine method

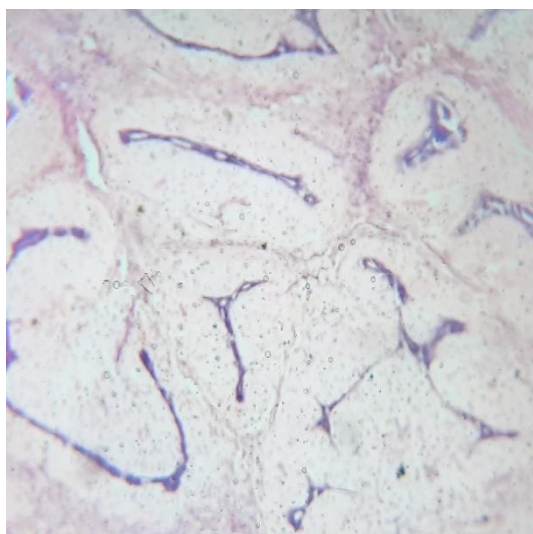


Microwave method

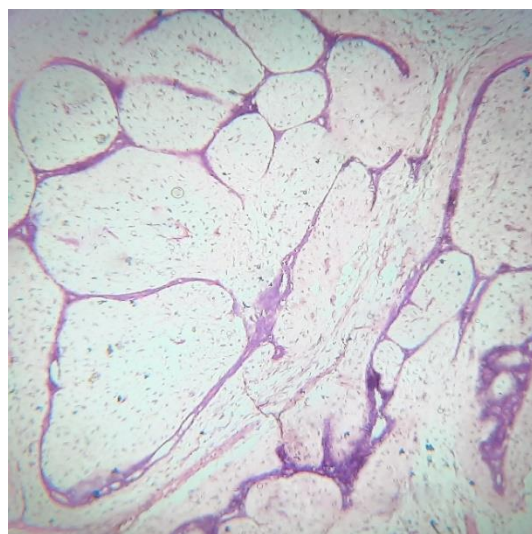
Case number: 216

HP Number:776/19

Diagnosis: Fibroadenoma



Routine method

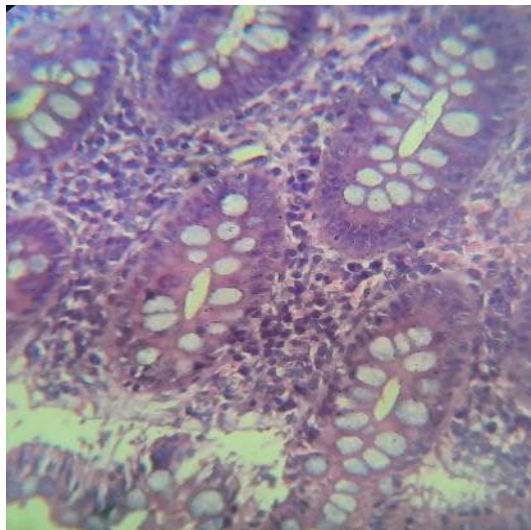


Microwave method

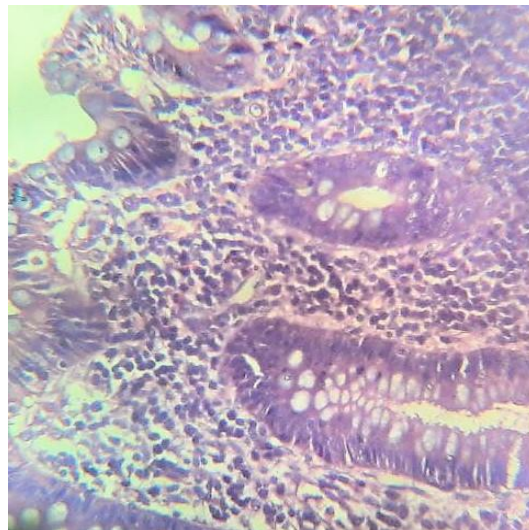
Case number: 233

HP Number:1023/19

Diagnosis: Appendix- Reactive lymphoid hyperplasia



Routine method

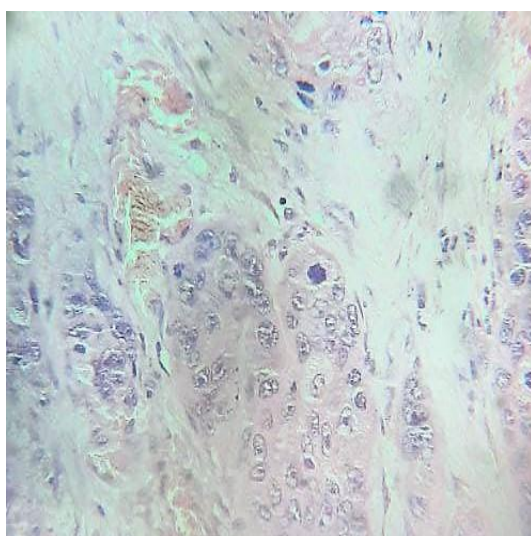


Microwave method

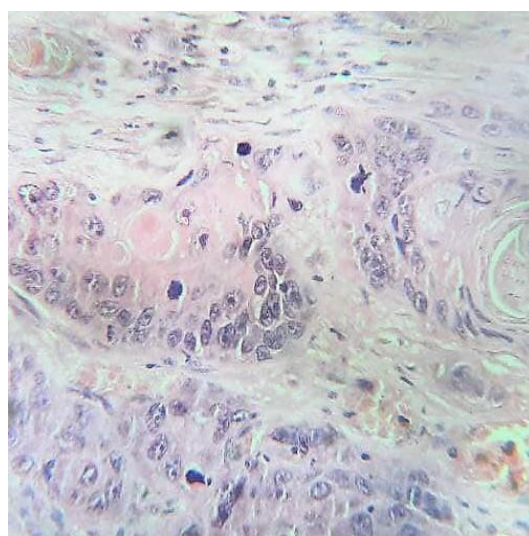
Case number: 294

HP Number:2618/19

Diagnosis: Well differentiated squamous cell carcinoma



Routine method

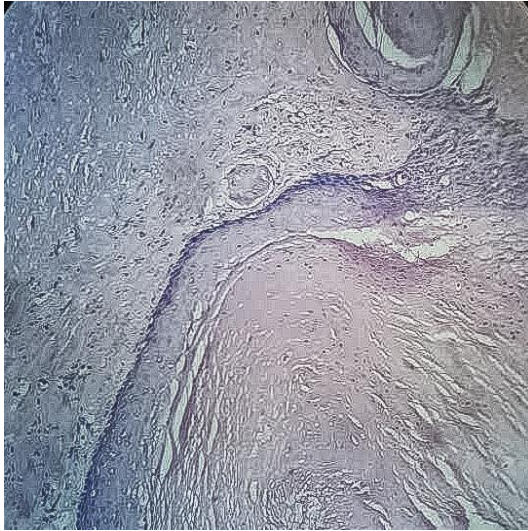


Microwave method

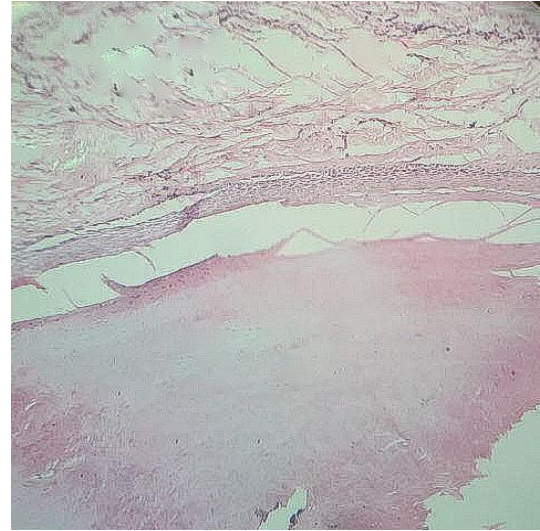
Case number: 303

HP Number:2794/19

Diagnosis: Trichilemmal cyst



Routine method

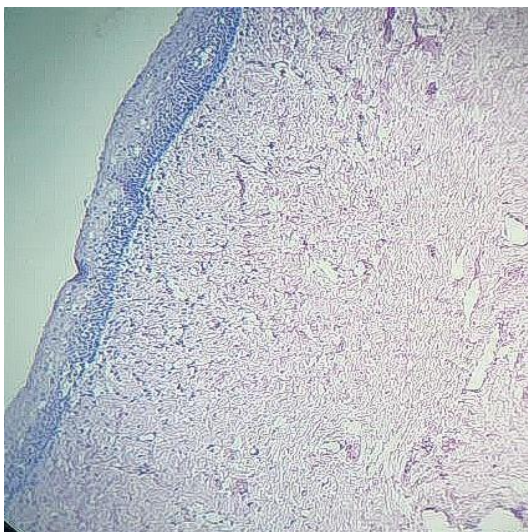


Microwave method

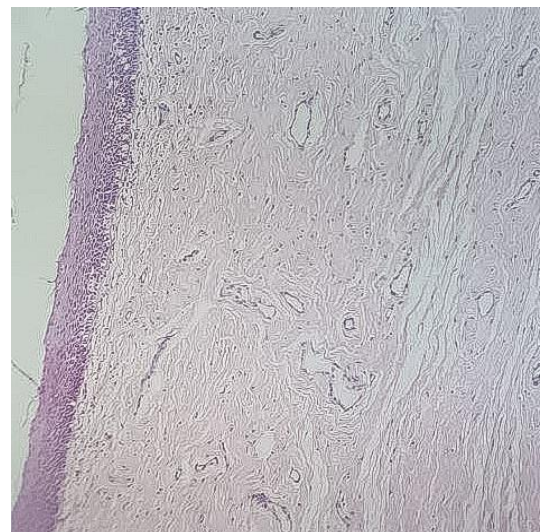
Case number: 308

HP Number:2840/19

Diagnosis: Cervix



Routine method

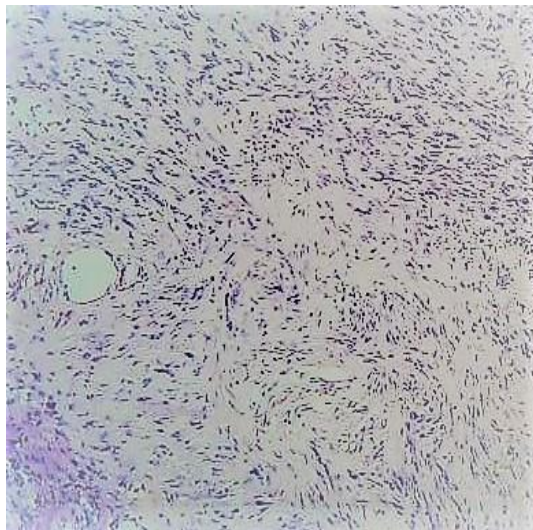


Microwave method

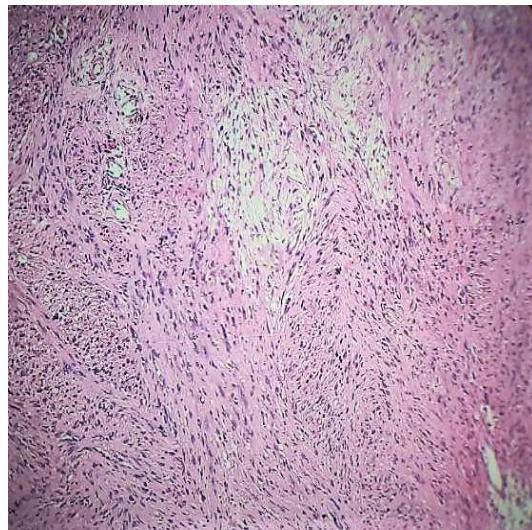
Case number: 328

HP Number:3150/19

Diagnosis:Schwannoma



Routine method

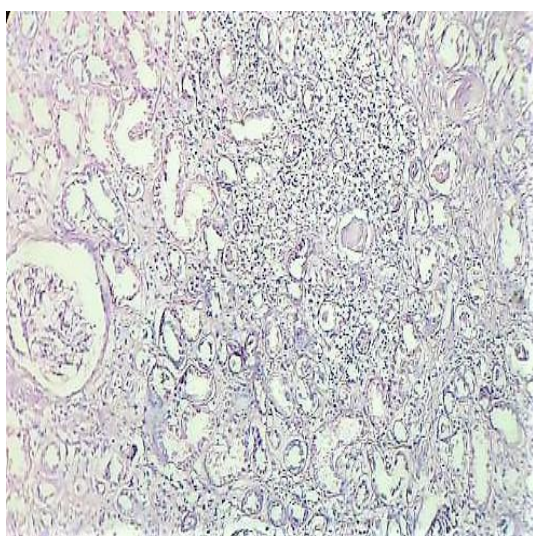


Microwave method

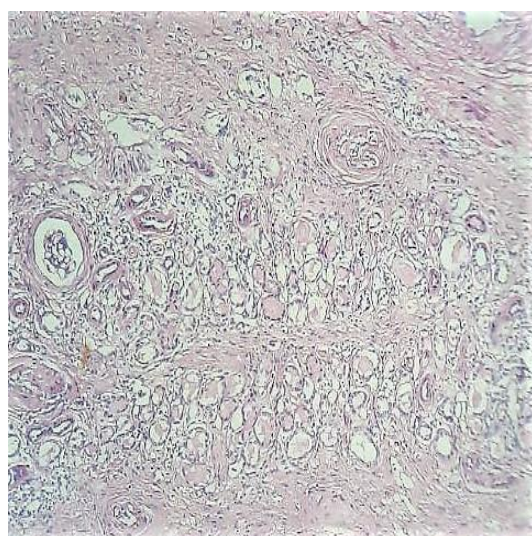
Case number: 330

HP Number:275/20

Diagnosis: Chronic pyelonephritis



Routine method

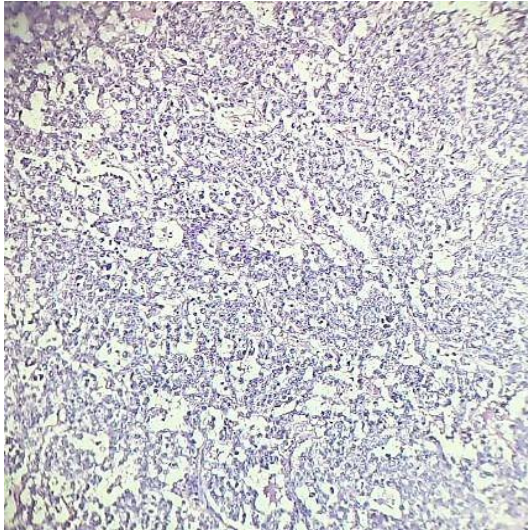


Microwave method

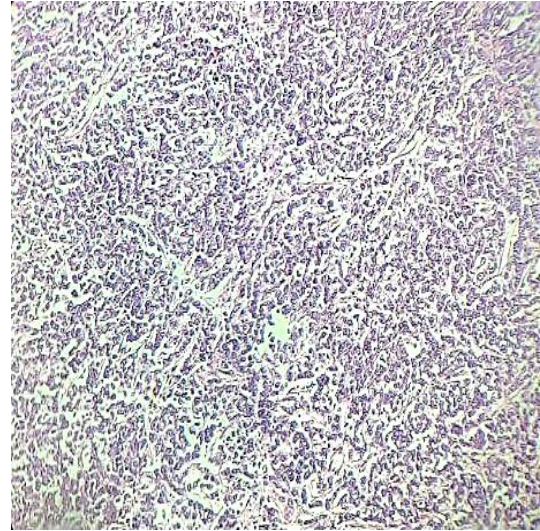
Case number: 333

HP Number:1182/20

Diagnosis:Dysgerminoma



Routine method

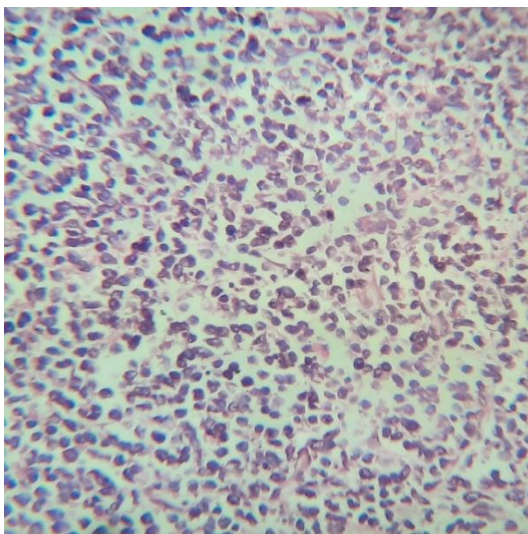


Microwave method

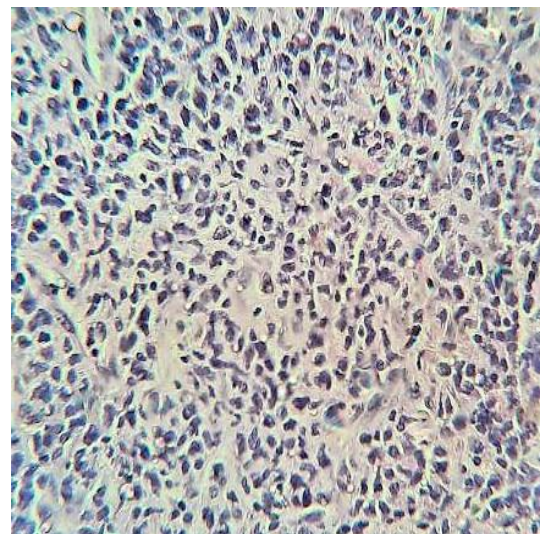
Case number: 347

HP Number:1557/20

Diagnosis: Diffuse large B cell lymphoma of mesentery



Routine method

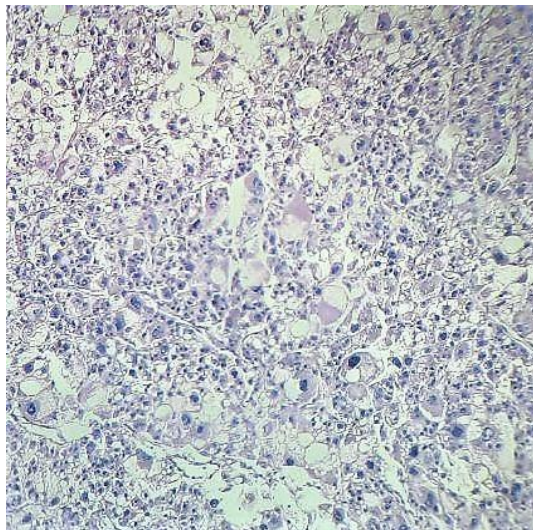


Microwave method

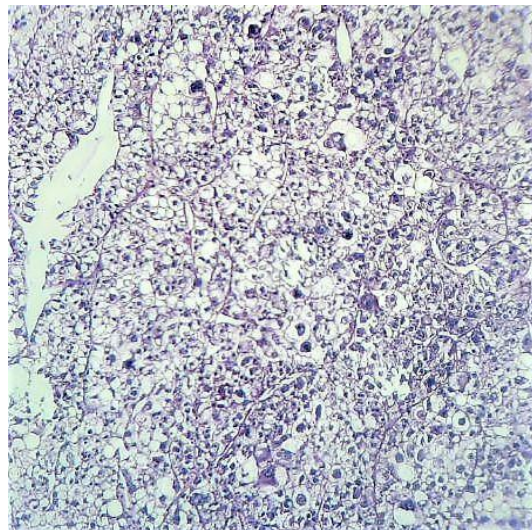
Case number: 335

HP Number:1270/20

Diagnosis:Hepatocellular carcinoma



Routine method

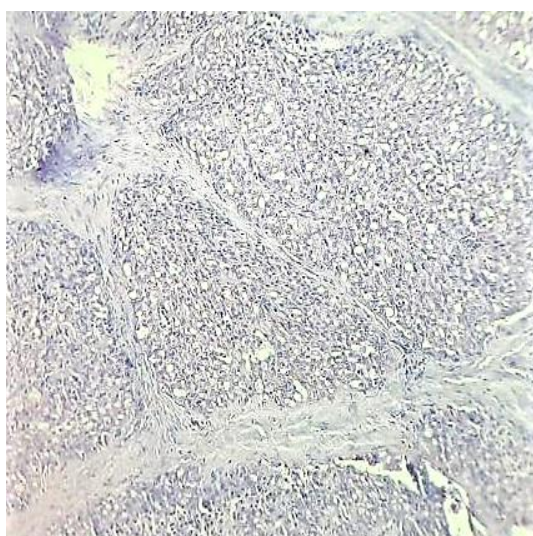


Microwave method

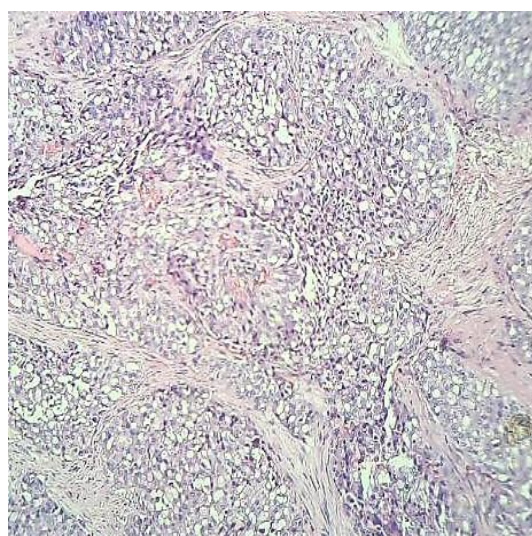
Case number: 336

HP Number:1344/20

Diagnosis: Mammary analogue secretory carcinoma



Routine method



Microwave method

Figure 6.14 - Special stain

Fontana Massion Stain

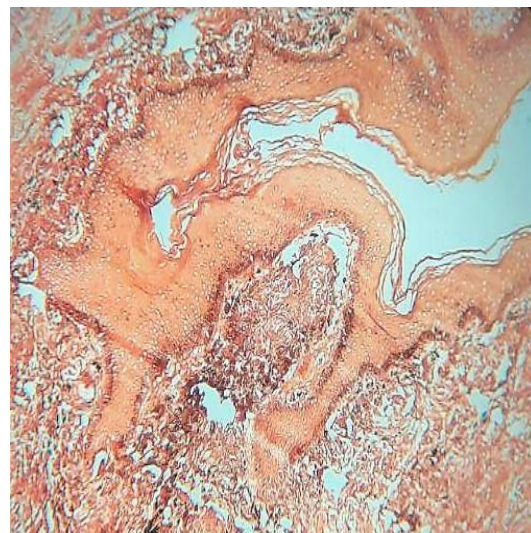
Case number: 78

HP Number:5161/18

Diagnosis: compound nevus



Routine method



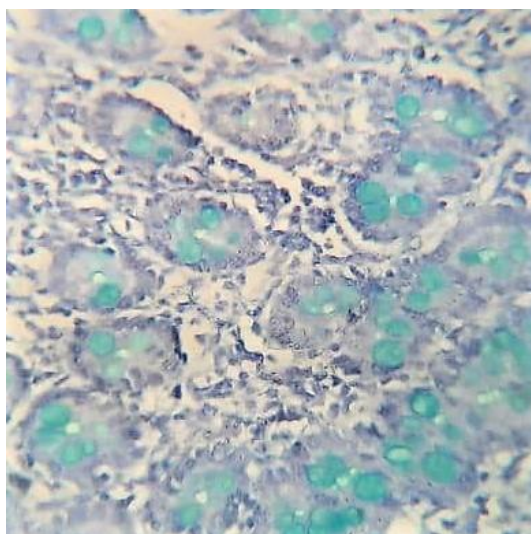
Microwave method

Alcian Blue stain

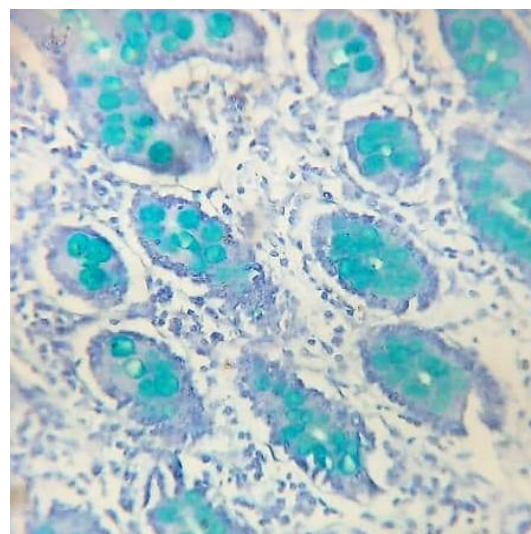
Case number: 99

HP Number:5479/18

Diagnosis: Jejunum



Routine method



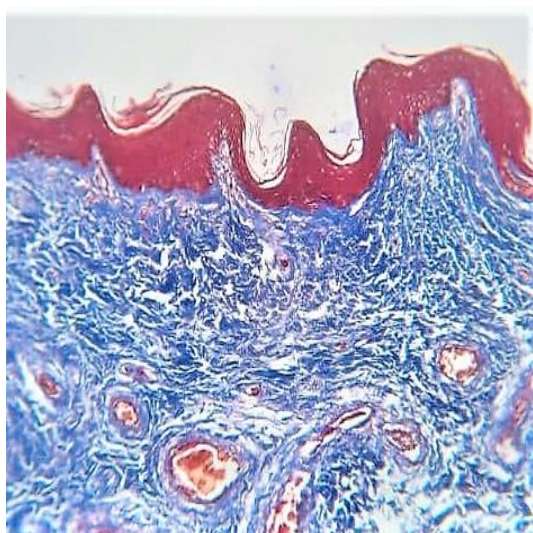
Microwave method

Massion Trichome stain

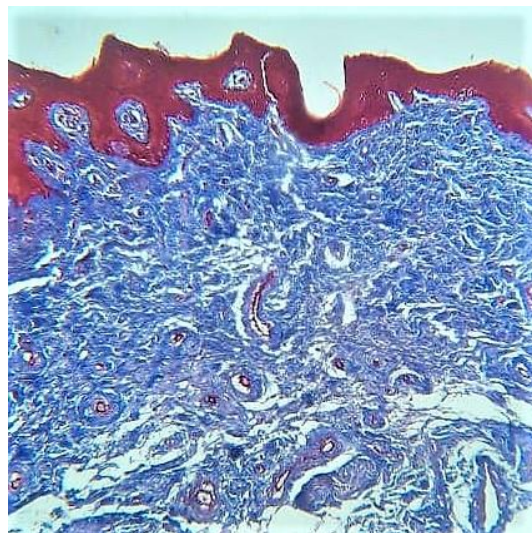
Case number: 298

HP Number:2674/19

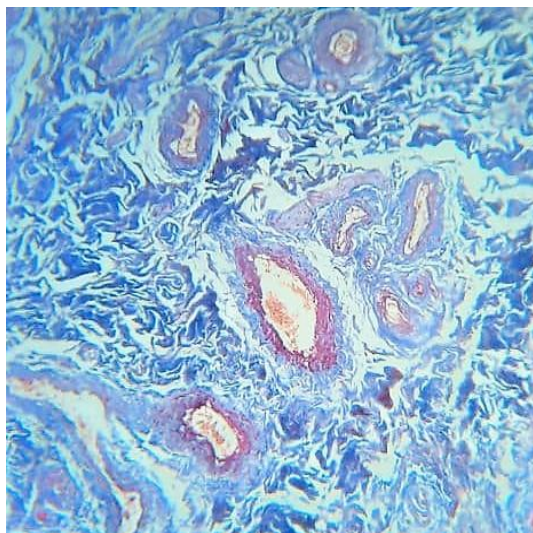
Diagnosis: Skin with underlying connective tissue



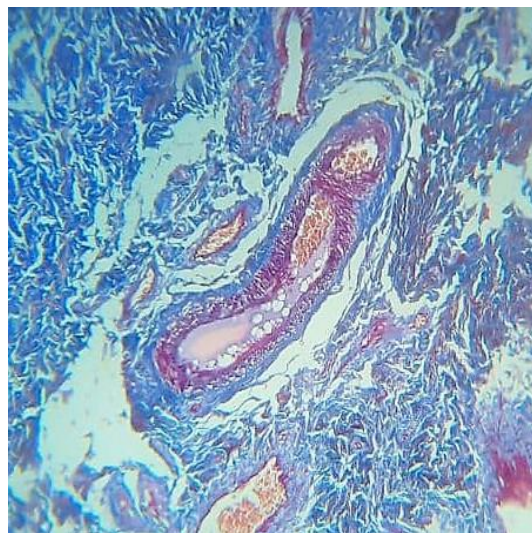
Routine method



Microwave method



Routine method



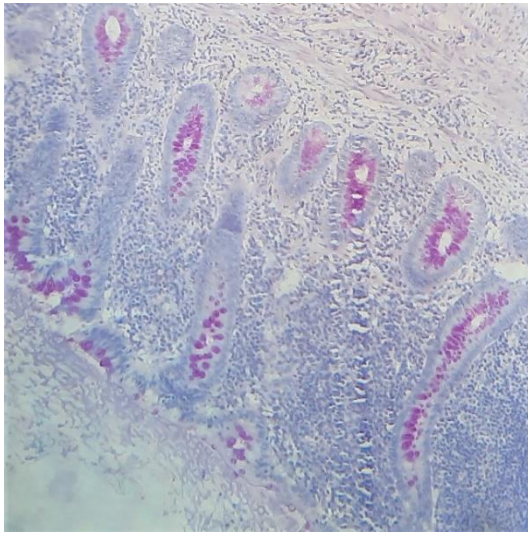
Microwave method

PAS stain

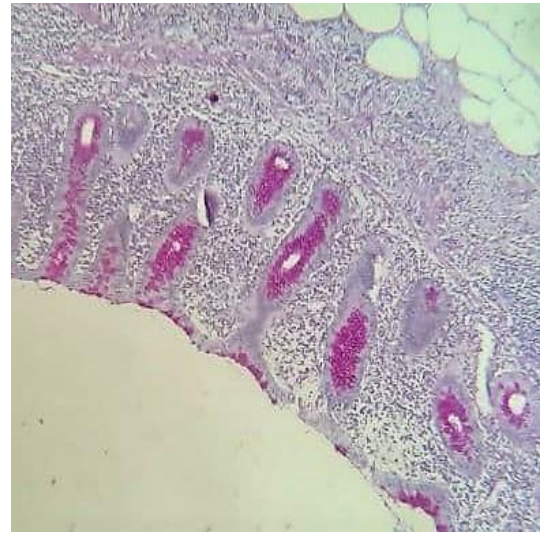
Case number: 197

HP Number:539/19

Diagnosis: Reactive lymphoid hyperplasia of appendix



Routine method



Microwave method

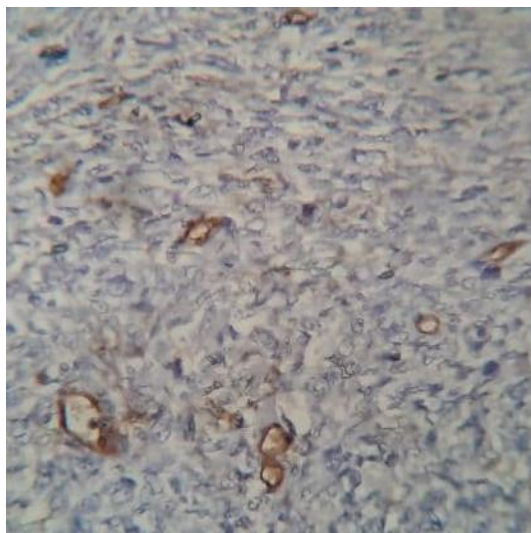
Figure 6.15 Immunohistochemistry

CD 34 IHC Stain

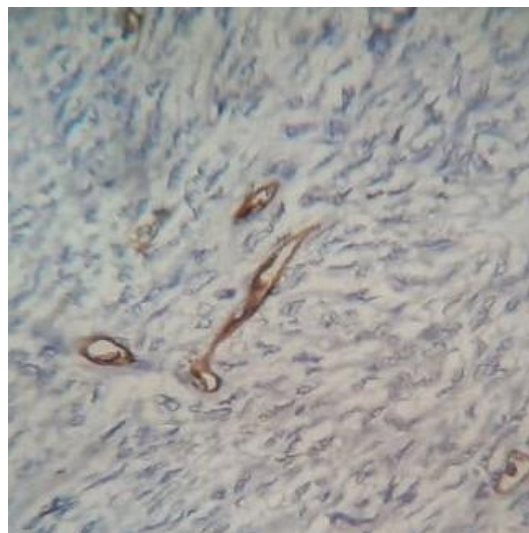
Case number: 64

HP Number:4915/18

Diagnosis:Borderline Phyllodes tumor



Routine method



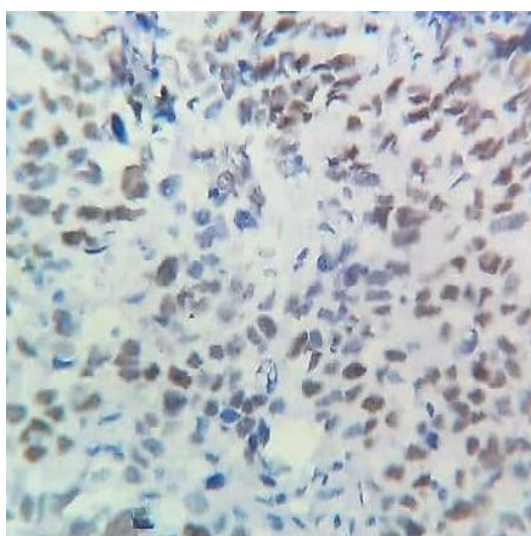
Microwave method

WT1 IHC stain

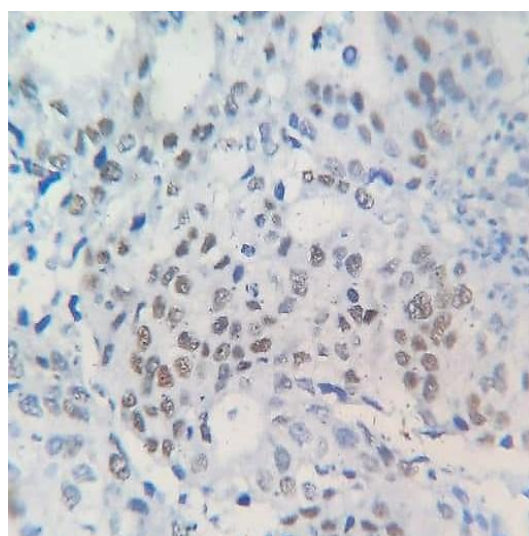
Case number: 91

HP Number:5186/18

Diagnosis: Serous papillary cystadenocarcinoma



Routine method



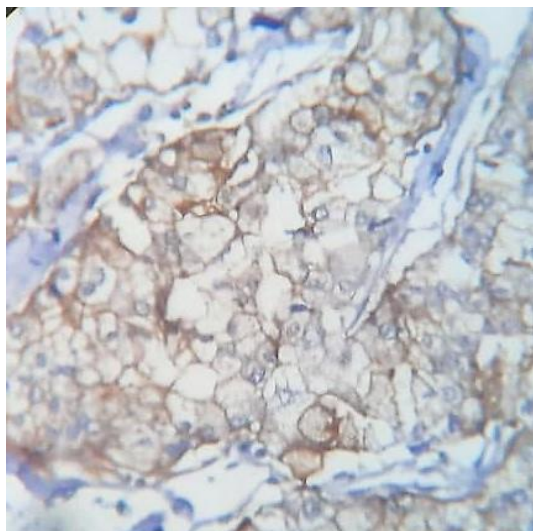
Microwave method

CD 10 IHC Stain

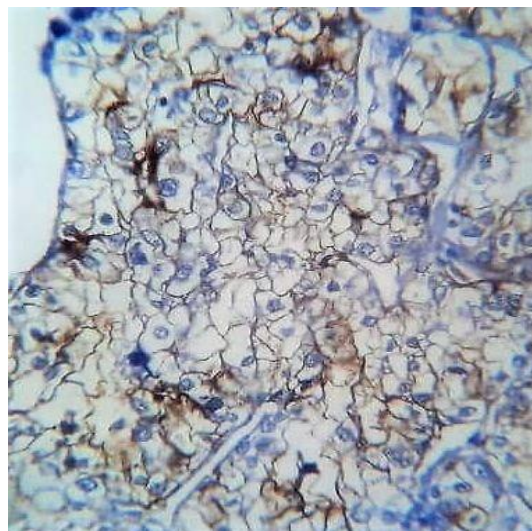
Case number: 178

HP Number:334/19

Diagnosis: Clear cell carcinoma of kidney



Routine method



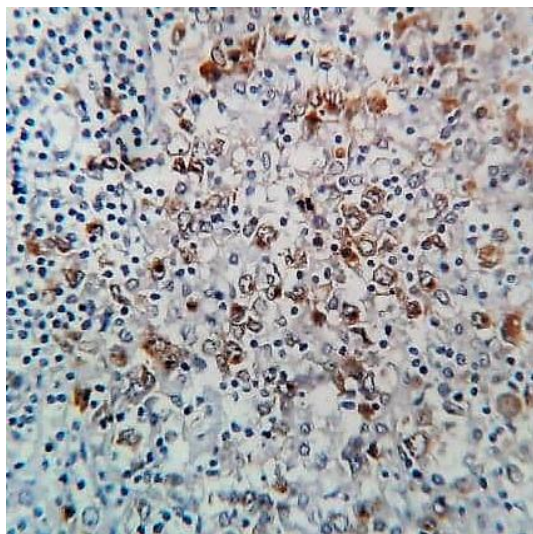
Microwave method

CD 30 IHC stain

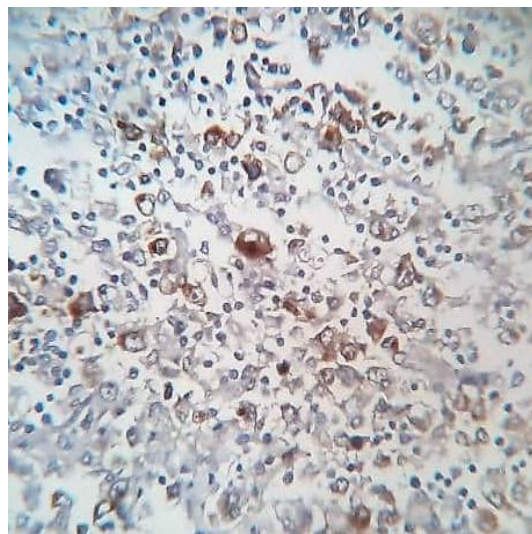
Case number: 237

HP Number: 1137/19

Diagnosis: Hodgkin Lymphoma



Routine method



Microwave method