

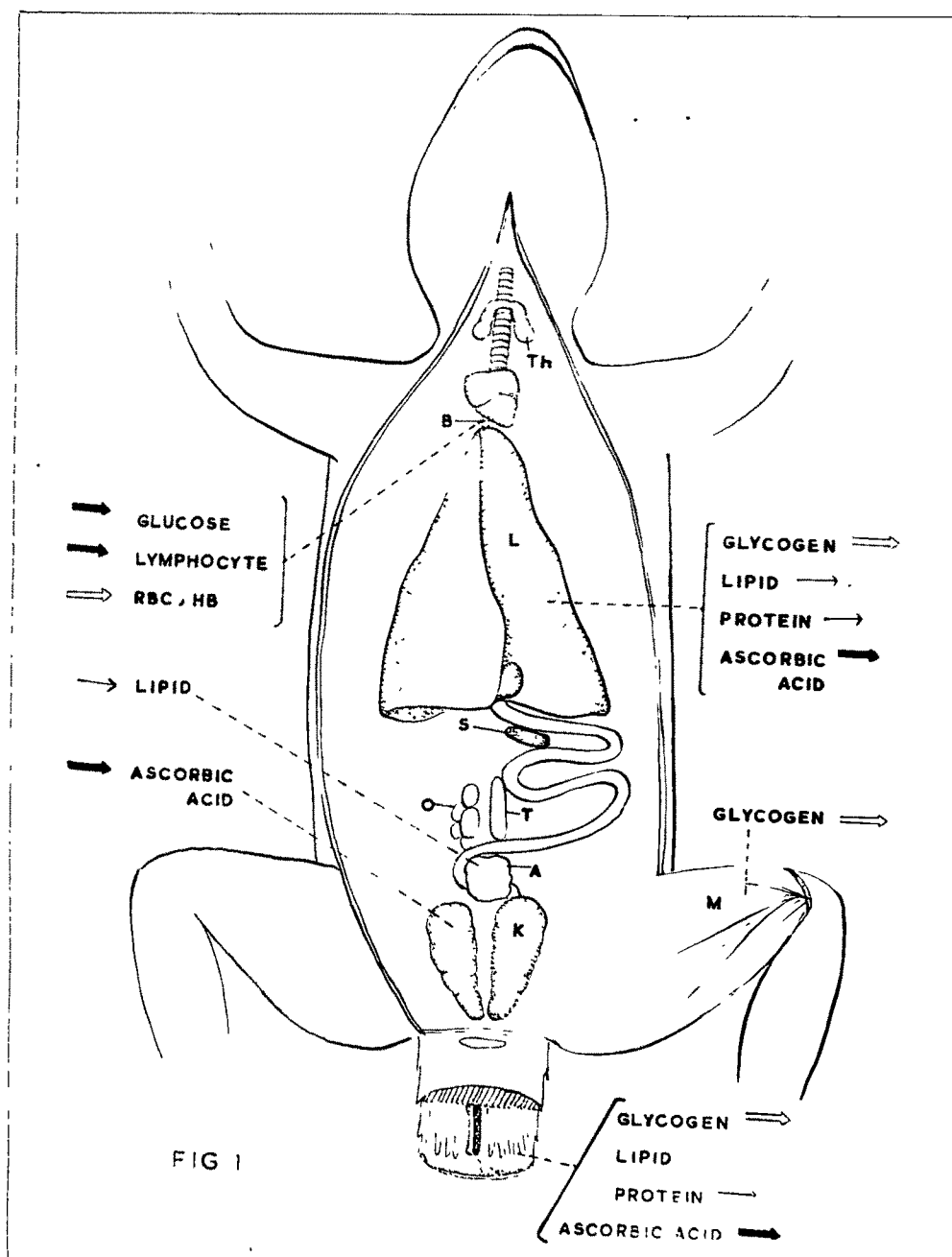
## ABBREVIATIONS

Th	-	Thyroid
B	-	Blood
L	-	Liver
S	-	Spleen
O	-	Ovary
T	-	Testis
A	-	Adipose tissue
K	-	Kidney
M	-	Muscle

→ Normal (Preautotomy) level

→ Above normal

⇐ Below normal



Diagrammatic representation of metabolic responses of certain visceral, organs during wound healing phase of tail regeneration in lizard, H. flaviviridis.

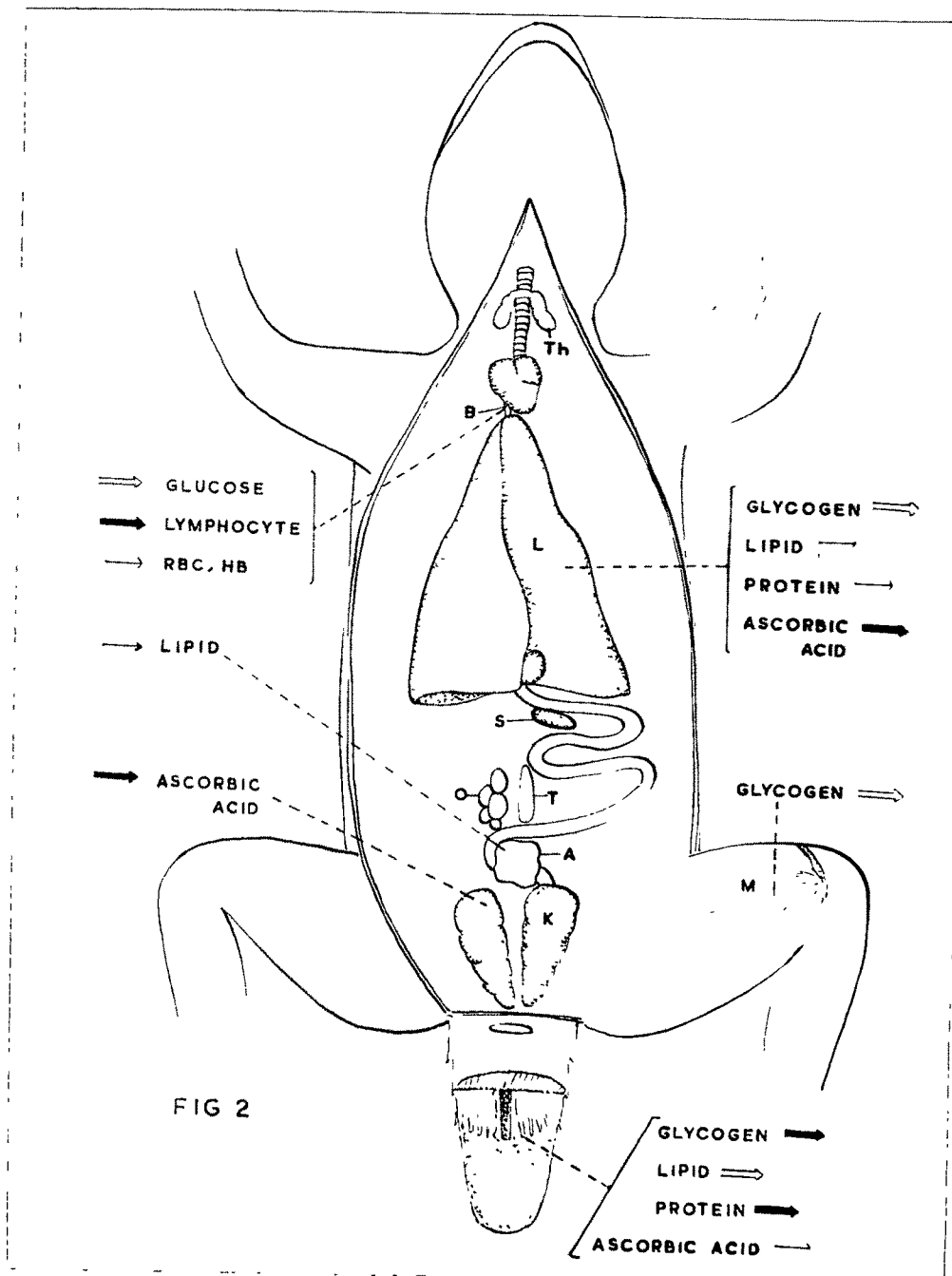
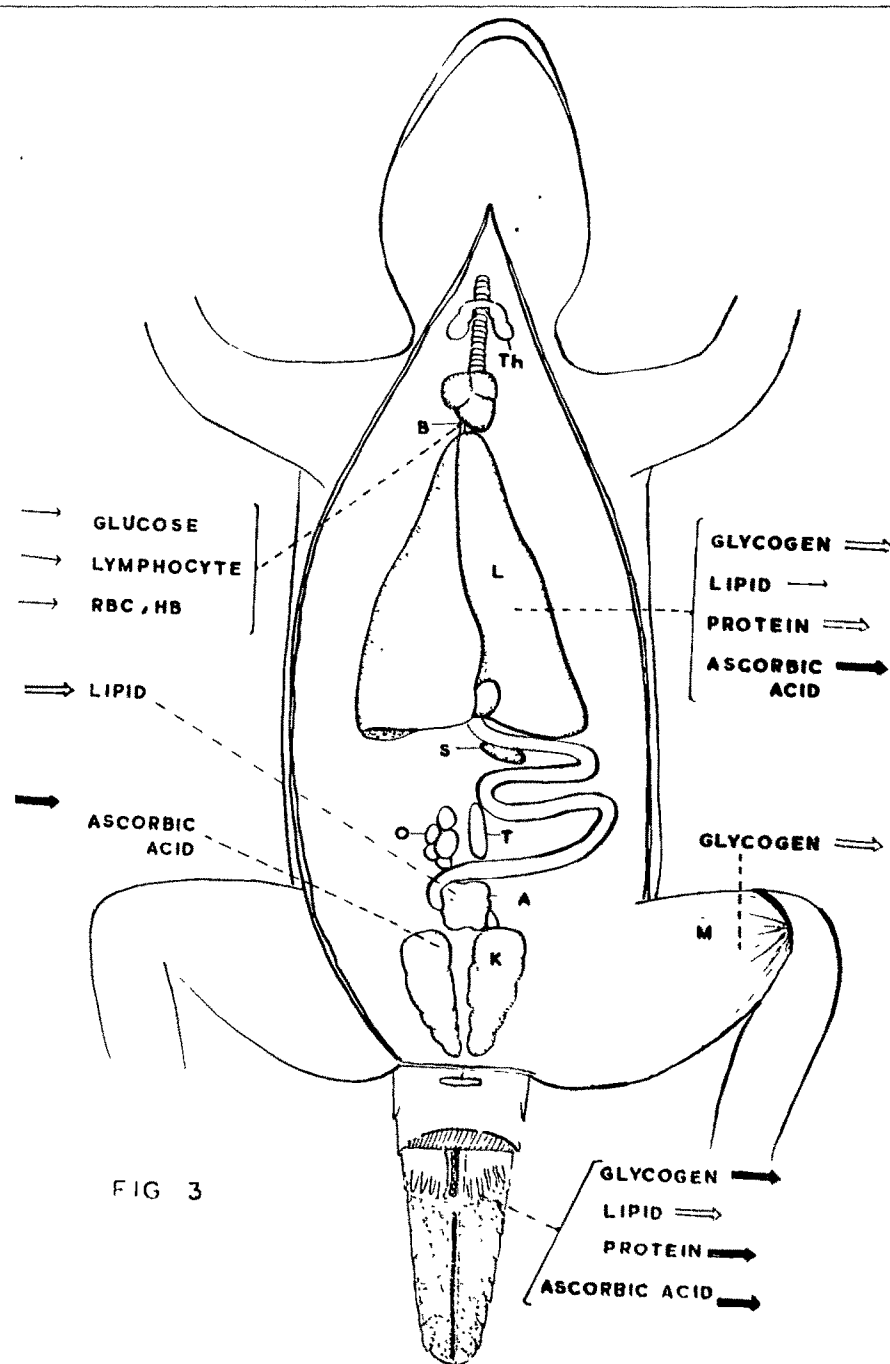


FIG 2

Diagrammatic representation of metabolic responses of visceral organs during blastema phase of tail regeneration in lizard, *H. flaviviridis*.



Diagrammatic representation of metabolic responses of visceral organs during differentiation phase of tail regeneration in lizard, *H. flaviviridis*.